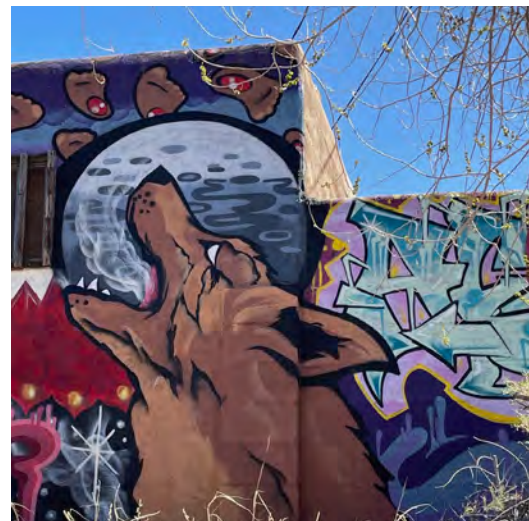




welcome to **SANTA FE**

THE CITY DIFFERENT

MARCH 2022





This Welcome to Santa Fe Guide has been provided through a generous grant from the NATIONAL ASSOCIATION OF REALTORS® Housing Opportunity Program and the Santa Fe Association of REALTORS®.

Copyright© 2022.

Permission to reprint the Welcome to Santa Fe Guide in its entirety is permitted by Santa Fe Association of REALTORS® members or may be obtained by contacting the association at:

Santa Fe Association of REALTORS®

[www.sfar.com](http://www.sfar.com) | (505) 982-8385

510 N. Guadalupe Ste E | Santa Fe, NM 87501

[info@sfar.com](mailto:info@sfar.com)

## **Why the City Different?**

PAGE 4

## **City Services**

animal control, fire protection, police

PAGE 6

## **County Services**

animal control, cab ride home program,  
fire protection, road maintenance, sheriff

PAGE 8

## **County Property Taxes**

PAGE 10

## **Santa Fe Region Transportation**

PAGE 12

## **Getting Connected in Santa Fe**

electricity, natural gas, water and sewer hookups, regional  
newspaper & magazine subscriptions, trash and recycling

PAGE 18

## **Homeowner and Resident Tips for Living in Santa Fe**

PAGE 32

## **Affordable Housing Programs**

PAGE 36

## **Recreation**

centers, parks, outdoor trails, sport leagues and tennis clubs

PAGE 48

## **Community Services**

libraries, mobile health van, senior and youth centers

PAGE 56

## **Education in Santa Fe**

PAGE 68

## **Health Care in Santa Fe**

PAGE 74

## **Things to See and Do**

PAGE 84

## **Registering to Vote**

PAGE 92

## **Santa Fe Lingo**

PAGE 94

**Bienvendos** or Welcome to Santa Fe known as the City Different. Every city is different, so what is so special about Santa Fe? First, it has a history dating back over 400 years and the oldest continuously occupied government building in the country, The Palace of the Governors on the Plaza.

Santa Fe has a wonderful climate enjoying over 325 days of sunshine and an average daily humidity of under 20%. There is snow in the winter and endless blue skies all year round. The city sits nestled in the Santa Fe River Valley at the foot of the 12,500 ft. high Sangre de Cristo Mountains with skiing only 30 minutes from the center of town.

As the western terminal of the Santa Fe Trail, Santa Fe served as the first link between the indigenous Pueblo Indian culture that occupied the Rio Grande Valley, the Spanish culture that settled here in the 16th century and the expanding American population that pushed west, first on the trail and then on the railroad in the 1880s.

What really makes Santa Fe different is its unique sense of place. The beauty of the surrounding mountains, the intertwining of ancient cultures into a rich tapestry of colonial and west frontier history, the living connection between the present and the past, the peoples and the land all combined into a very special personal experience of this community at the heart of the "The Land of Enchantment."

The walkable scale of the Plaza area is reflective of an earlier time. The many shops, galleries, and restaurants provide a rich variety of options. There are wonderful museums from Indian Arts to Folk Arts to Spanish Colonial Arts. Outside of Santa Fe, there are unending outdoor opportunities for the adventurous to explore, to hike, to bike, to ski or just sit and take in the surrounding countryside that has inspired generations of artists like Georgia O'Keeffe.



As the first designated [UNESCO Creative City](#) for craft and folk arts, Santa Fe attracts accolades from national magazines and organizations. Most recently, Condé Nast Traveler honored Santa Fe with one of the “Best Small Cities in America” award citing the city’s unique beauty, colorful culture, unrivaled art and architecture as key reasons for their decision. Santa Fe has been recognized over the years as one of the top destinations to visit in America and is a wonderful place to live, either to retire or raise a family. The small scale and intimacy of Santa Fe is unique for the wide range and depth of available cultural activities rivaling those offered in much larger metropolitan areas.

Furthering its uniqueness, Santa Fe boasts a tri-culture heritage in an unusual historic blend of Native America, Spanish and Anglo influences. This historical blend makes for a rewarding mix of these elements into everyday life. It is this cultural backdrop found in a thriving modern community where one finds a city that welcomes diversity, embraces both time-honored traditions and progressive thinking, while offering stellar live music, opera and culinary treats.

Based on information from the Santa Fe City & County Economic Development, here are a few general statistics to help you learn more about your new community.

#### POPULATION:

154,823 – County of Santa Fe  
87,505 – City of Santa Fe  
(2020 CENSUS)

#### EDUCATION:

High School Degree or higher: 89.3%  
Bachelors or higher: 41.0%  
(25 YEARS OR OLDER IN SANTA FE COUNTY - 2015-19 CENSUS)

#### UNEMPLOYMENT RATE:

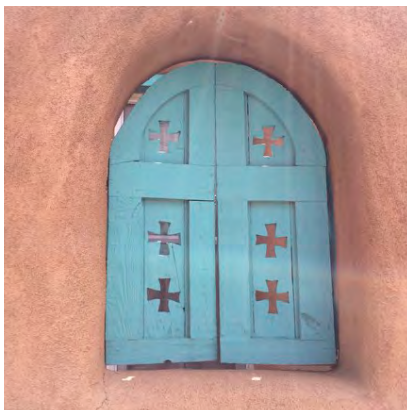
8.3% – Santa Fe MSA 2020  
(U.S. BUREAU OF LABOR STATISTICS)

#### MEDIAN HOUSEHOLD INCOME:

\$61,200 – County of Santa Fe  
\$53,972 – City of Santa Fe  
(2015-2019 CENSUS)

#### MEDIAN HOUSEHOLD SALES PRICE:

\$575,153 – County of Santa Fe  
\$428,500 – City of Santa Fe  
(2020 – MLS LISTINGS)



## ANIMAL

[https://www.santafenm.gov/animal\\_services](https://www.santafenm.gov/animal_services) | (505) 955-2701

Dogs must be leashed at all times (with a leash no longer than 8 feet in length) and under the immediate physical control of its owner. You must clean up after your pet. The only exception is in a designated dog park. Dogs and cats are not allowed to run loose.

### DESIGNATED DOG PARKS:

Frank Ortiz Park: 160 Camino de las Crucitas  
DESIGNATED AREA BEHIND CHILDREN'S PLAYGROUND

Salvador Perez Park: 601 Alta Vista Street  
DESIGNATED AREA BEHIND COMPLEX

Villa Linda Dog Park: 4250 Cerrillos Road (next to the Santa Fe Place Mall)  
DESIGNATED AREA NORTH OF PLAYGROUND

Sierra del Norte Dog Park: 1800 Hyde Park Road  
DESIGNATED PARK AREA ONLY. DOGS MUST BE ON A LEASH ON THE TRAIL

Santa Fe Animal Shelter & Humane Society Dog Parks: 100 Caja del Rio Road  
SINGLE USE PARKS AVAILABLE

### RULES:

People must clean up after their pets.

Dogs showing aggression toward people or other dogs must be immediately leashed and removed from the park.

Dogs must be wearing an up-to-date rabies vaccination and animal license tag at all times.

Dog owners, or those having charge or custody of a dog, are legally responsible for their dogs and any injuries caused by their dogs.

People must remain with their dogs, must keep their dog in sight, and must carry a leash at all times. Leaving dogs unattended is prohibited.

Dogs must be leashed before entering and upon leaving the designated off-leash area.

All dogs using the park must be spayed or neutered unless under five months of age. No female dogs in season are allowed in the park.

A limit of three dogs per person, per visit.

People must not allow their dogs to dig or to unduly disturb the terrain or vegetation.

Professional dog trainers may not use the dog parks to conduct their business for monetary purpose.

All dogs, cats, and ferrets over the age of three (3) months must be vaccinated against rabies and must be licensed through the Santa Fe Animal Shelter and Humane Society. All dogs and cats over the age of six (6) months must be spayed or neutered unless proper permits

and licenses have been purchased from City Animal Services and the Santa Fe Animal Shelter and Humane Society. All animals must be provided with proper food, clean water, structurally sound shelter, shade, ventilation, necessary medical care, and basic grooming. It is unlawful to confine an animal in or upon a motor vehicle in such a manner as may cause harm or death to the animal.

**Special Events on the Plaza:** All animals are banned from the Plaza during the Fourth of July Pancake Breakfast, Spanish Market, Girls Inc., Indian Market, Santa Fe Fiesta Labor Day Arts and Crafts Market, and Santa Fe Fiesta. Service animals are exempt.

**Animal Nuisances:** Pet owners must clean up after their animals and dispose of their waste properly. Animals tearing trash or destroying others' properties are also considered nuisances.

**Barking:** Animals are not to disturb the public peace unreasonably. Barking complaints are made through the Animal Services office.

## **FIRE**

[www.santafenm.gov/fire\\_department](http://www.santafenm.gov/fire_department)

**Emergency: Dial 911**

Non-Emergency Dispatch: (505) 428-3730

Administration: (505) 955-3110

Due to severe drought conditions and wild land fire conditions, the Santa Fe Fire Department has the authority to impose fire restrictions. The Santa Fe Fire Department may prohibit: all open burning; the use of charcoal barbecue grills in public parks and recreation areas; smoking in public parks, recreation areas, or any public trail; the use of motorized ATVs or motorcycles on City-owned open space, parks, trails or other recreational areas; and all types of fireworks. To determine if any fire restrictions are in place, visit: [www.santafenm.gov/fire\\_department](http://www.santafenm.gov/fire_department)

## **POLICE**

[www.santafenm.gov/police](http://www.santafenm.gov/police)

**Emergency: Dial 911**

Non-Emergency Dispatch: (505) 428-3710

Administration: (505) 955-5010

Drug Tip Hotline: (505) 428-3737

Residents must register any alarm system with the City of Santa Fe and meet the requirements of the alarm ordinance. To learn more about the alarm ordinance adopted to reduce false alarms and to register your alarm visit:

[www.santafenm.gov/police\\_alarm\\_enforcement](http://www.santafenm.gov/police_alarm_enforcement)

### 2018 CRIME DATA

Homicides	5
Robberies	89
Reported Rapes	32
Burglaries	1380
(CITY-DATA.COM)	

## ANIMAL CONTROL

[www.santafecountynm.gov/sheriff/animal\\_control](http://www.santafecountynm.gov/sheriff/animal_control) | (505) 992-1626

Santa Fe Animal Shelter & Humane Society: 100 Caja Del Rio

All dogs and cats over the age of 3 months must have a rabies shot.

All dogs over the age of 3 months must have a county license.

A copy of the dog's current rabies vaccination is required to obtain a license.

Licenses can be obtained from the Santa Fe Animal Shelter & Humane Society and can be reached at (505) 983-4309 or you can visit: [www.sfhumanesociety.org/our-programs/licensing](http://www.sfhumanesociety.org/our-programs/licensing)

for licensing information and fees. To report any animal violations, please call Santa Fe County Animal Control Dispatch at (505) 428-3720 or the Animal Control office at (505) 992-1626.

It is unlawful for any owner of an animal to fail, refuse, or neglect to provide his or her animal with proper and adequate food, water, and shade or shelter.

All persons owning or having charge of an animal must keep the animal restrained on their premises.

It is unlawful to allow any dog to run at large.

It is unlawful for a pet owner to allow animals to persistently or continuously bark, howl or make noise common to their species, or otherwise disturb the peace.

## ROAD MAINTENANCE

[www.santafecountynm.gov/public\\_works/road\\_concern](http://www.santafecountynm.gov/public_works/road_concern)

Santa Fe County has a program where residents can report a road concern. Please notify Santa Fe County Public Works Department of any routine road maintenance concerns in your area. Santa Fe County can only provide maintenance on County maintained roads; therefore, the system will only accept valid County roads for maintenance requests.





**FIRE**

[www.santafecountynm.gov/fire](http://www.santafecountynm.gov/fire) | (505) 992-3070

Fire Administration Headquarters: 35 Camino Justicia

The Santa Fe County Fire Department is a combination fire department integrating paid staff and the service of dedicated volunteers. The Department provides protection to approximately 76,000 residents including four Pueblos – Nambe, Pojoaque, Tesuque, and San Ildefonso - which rely on the Santa Fe County Fire Department for emergency services. The Department maintains 32 fire stations countywide including five staffed regional stations and one staffed substation.

Volunteer Fire Districts info link: [www.santafecountynm.gov/fire/volunteer\\_fire\\_districts](http://www.santafecountynm.gov/fire/volunteer_fire_districts)

**SHERIFF**

<http://www.santafecountynm.gov/sheriff> | (505) 986-2455

Santa Fe County Public Safety Building: 35 Camino Justicia

Get alerts to your mobile or email via NIXLE. Just visit [www.nixle.com](http://www.nixle.com) and register to receive up-to-date alerts for crimes, traffic concerns, natural disasters, and other emergency notifications from the Santa Fe County Sheriff's Office.

Crime Mapping is available for Santa Fe County in a partnership with [www.crimereports.com](http://www.crimereports.com) allows both the public and deputies in the field to use maps to view, analyze and learn about crime in Santa Fe County. Crimes within Santa Fe County are mapped by block number within 72 hours. The data can be searched by crime type and includes case numbers. Sex offender information is also mapped and [www.crimereports.com](http://www.crimereports.com) can send crime alerts via e-mail to subscribers and through an iPhone app available for free. Crime data is available for up to 6 previous months at a time. Santa Fe County Sheriff's Office arranged to offer this service to citizens as a way to combat crime and provide transparency by providing as much information to the public as possible.

Graffiti Hotline: (505) 995-2721

To report vandalism in progress, graffiti or to request graffiti removal

Crime Stoppers is offering a reward of up to \$500 for information leading to the arrest of persons vandalizing property with graffiti.

Santa Fe Crime Stoppers: (505) 955-5050

To report information to solve crimes and to locate fugitives from justice.

## COUNTY OF SANTA FE PROPERTY TAX INFORMATION

[www.santafecountynm.gov/treasurer](http://www.santafecountynm.gov/treasurer) | (505) 986-6245

Santa Fe County Treasurer's Office: 100 Catron Street

The County of Santa Fe Treasurer's office collects property taxes which are re-distributed to the state of New Mexico, City of Santa Fe, County of Santa Fe, Santa Fe Public Schools and Santa Fe Community College among others. The office is open to the public during the following business hours: **Monday through Friday from 8 a.m. until 5 p.m. Closed for business on Saturdays, Sundays and County Holidays.**

An **after-hours secure payment drop box** is available in front of the administration building at the address below. Please place check or money order in an envelope and drop it in the secure box for collection.

Mailing Address for Payments:

P.O. Box T

Santa Fe, NM 87504

Property Tax Payment Deadlines:

First Half Tax Payments Due by 12/10 (of each year)

Second Half Tax Payments Due by 5/10 (of each year)

Tax Installment Plan

Santa Fe County Treasurer, Jennifer Manzanares is offering property owners the option of making prepayments for their property taxes in ten monthly payments.

Tax Installment Plan 2022

[www.santafecountynm.gov/media/files/Treasurer/2022\\_PaymentPlan\\_Santafe.pdf](http://www.santafecountynm.gov/media/files/Treasurer/2022_PaymentPlan_Santafe.pdf) PayTaxes Online



The Santa Fe County Treasurer's Office, the property tax collector for the County of Santa Fe, offers the option of paying taxes online with a credit card. Residents may still pay by mail or deliver payments in person.

Pay Your Taxes Online: <https://ipn2.paymentus.com/cp/sfnm>

Please click here for information on property value exemptions:

[www.santafecountynm.gov/assessor/forms\\_and\\_exemptions](http://www.santafecountynm.gov/assessor/forms_and_exemptions)





## BUS SERVICE

[www.santafenm.gov/transit](http://www.santafenm.gov/transit) | (505) 955-2001

Santa Fe Trails Main Office: 2931 Rufina Street

The City of Santa Fe offers a comprehensive bus service for its residents and guests.

Click here for maps and schedules: [https://www.santafenm.gov/route\\_maps\\_and\\_schedules](https://www.santafenm.gov/route_maps_and_schedules)

BUS FARES	One-Way Trip	1 Day Pass	5 Day Pass	15 Day Pass	31 Day Pass	Semi Annual	Annual
Adult 19-59	\$1.00	\$2.00	\$7.00	\$10.00	\$20.00	\$110.00	\$200.00
Senior 60+	\$0.50	\$1.00	\$3.50	\$5.00	\$10.00	\$55.00	\$100.00
Student 18+	\$1.00	\$2.00	-	-	\$17.00		

Students can purchase a 120 Day Pass for \$60.00.  
Youth (up to 18) may require ID & Veterans\*\* ride for Free; College Students need ID.

\*MEDICARE cards are accepted for the reduced fare.

\*\*To obtain Santa Fe Trails Veterans ID, visit the Main Office at 2931 Rufina Street.

Semi Annual, Annual, 3 day, 5 day and 15 day passes sold at Santa Fe Trails Main Office only.

Partnership Program for Non-Profit & Social Services Agencies who purchase bus passes in volume for their indigent clients.

### BUS PASSES MAY BE PURCHASED:

On the bus (exact cash only)

At the Santa Fe Trails Main Office located at 2931 Rufina St.  
(cash-exact change only, check or most credit cards)

### STUDENT PASS SOLD:

At the Santa Fe Community College book store: [www.sfcc.edu/bookstore](http://www.sfcc.edu/bookstore)

At St. John's College book store: [www.sjc.edu/santa-fe/book](http://www.sjc.edu/santa-fe/book)

\*\*\* Student must present a valid student ID\*\*\*

No refunds on Bus Passes, expired passes are no longer valid after expiration date and bus passes expire after 1 year of purchase.

## **SANTA FE RIDE (PARA-TRANSIT SERVICE)**

[www.santafenm.gov/santa\\_fe\\_ride](http://www.santafenm.gov/santa_fe_ride) | (505) 473-4444

In addition to the fixed route service, the City of Santa Fe provides ADA complementary paratransit service. This is “origin to destination” transportation service for persons with disabilities who cannot use the regular bus service. It is primarily curb to curb service, but door to door service is provided upon request. This service is provided during the same days and hours of operation of the fixed route service.

Individuals who wish to be considered for this service will need to complete an application, have the information verified by a medical professional, and be certified by us as ADA paratransit eligible. The cost for this service is \$2.00 for each one-way trip within the city limits.

For Seniors, the cost of this service is \$5.00 for each one-way trip within the city limits. Qualifying U.S. Veterans ride FREE.

The ParaTransit driver will assist an individual to get on or off the vehicle, but will not load or unload the individual’s personal belongings or carry-on items. If an individual needs assistance beyond this, he/she must be accompanied by a personal care attendant. Required personal care attendants ride free with the person they are assisting.

You may read the entire Santa Fe Ride policies and procedures by clicking here.

[www.santafenm.gov/media/files/Santa\\_Fe\\_Ride\\_ADA\\_Complementary\\_Paratransit\\_Policies\\_Procedures.pdf](http://www.santafenm.gov/media/files/Santa_Fe_Ride_ADA_Complementary_Paratransit_Policies_Procedures.pdf)



**NORTH CENTRAL REGIONAL TRANSIT DISTRICT (Regional Bus Service)**

[www.ncrtd.org](http://www.ncrtd.org) | (505) 629-4725 | 866-206-0754

1327 N. Riverside Drive | Española, NM 87532

The North Central Regional Transit District began service in 2007. It provides free and premium fare-based bus transit connecting communities and pueblos throughout the counties of north central New Mexico including Los Alamos, Rio Arriba, Santa Fe and Taos. Further expanding its reach, the signature RTD Blue Buses provide riders with connections to New Mexico Rail Runner, Santa Fe Trails, New Mexico Park and Ride, Los Alamos Atomic City Transit, Po'Pay Messenger Service and Red River Miner's Transit. All of its buses are ADA accessible and equipped with bicycle racks. The RTD provides service on 28 Fixed routes, two Demand Response routes and one Dial-a-Ride service.

Visit [ncrtd.org/all-routes/](http://ncrtd.org/all-routes/) to access Santa Fe area routes.

**AMTRAK (Train Service)**

[www.amtrak.com](http://www.amtrak.com) | 800-872-7245

The Amtrak train station in Lamy, New Mexico, approximately 25 miles from Santa Fe, has an enclosed waiting area without Wi-Fi, parking, and an accessible platform with no wheelchair available. To check train schedules, visit: [www.amtrak.com/home](http://www.amtrak.com/home).

**RAIL RUNNER EXPRESS (Regional Train Service)**

866-795-7245

Santa Fe Trails accommodates train passengers with connecting bus service at variety of locations throughout Santa Fe. Ride the bus to the train station and eliminate parking costs, gas costs and traffic woes. Ride for free by just showing your bus driver your Rail Runner Day or Monthly Pass. Rail Runner E tickets on your mobile device are accepted.

For a bus route map for the Santa Fe locations click the link: New Mexico Rail Runner Express Stations: [www.santafenm.gov/media/files/transportation/transit/SANTA\\_FE\\_TRAILS\\_CONNECTION\\_TO\\_RAIL\\_RUNNER\\_8-11-14\\_2.pdf](http://www.santafenm.gov/media/files/transportation/transit/SANTA_FE_TRAILS_CONNECTION_TO_RAIL_RUNNER_8-11-14_2.pdf)

NEW MEXICO RAIL RUNNER EXPRESS

[www.riometro.org](http://www.riometro.org)

Rail Runner express schedule, connections, fees, stations and more.



## SANTA FE PICK-UP DOWNTOWN SHUTTLE

[https://www.santafenm.gov/santa\\_fe\\_pickup\\_shuttle](https://www.santafenm.gov/santa_fe_pickup_shuttle)

A free shuttle runs every 15 to 20 minutes depending upon traffic, Monday through Saturday.

## PARKING

[www.santafenm.gov/parking](http://www.santafenm.gov/parking) | (505) 955-6581

Parking Division Administrative Services

500 Market Street, Suite 200

Monday-Friday 8am-5pm

## SANTA FE PARKING PERMITS MONTHLY LOT/GARAGE PARKING PERMITS

Monthly parking permits are issued at City of Santa Fe garages and lots. At the time of application, a refundable security deposit of \$21.00 is required. The chart below shows current permit availability at our facilities. Visit [https://www.santafenm.gov/apply\\_for\\_a\\_parking\\_permit](https://www.santafenm.gov/apply_for_a_parking_permit) to learn more about the permits, access forms and availability. Need to rent a parking meter, call (505) 955-6973 or visit: [www.santafenm.gov/parking\\_meter\\_hood\\_application](http://www.santafenm.gov/parking_meter_hood_application) To report a broken meter, visit: [www.santafenm.gov/report\\_a\\_broken\\_meter](http://www.santafenm.gov/report_a_broken_meter)

FACILITY	Monthly Rate	Annual Admin Fees	Total Due at Purchase
Water Street	\$68.25	\$21.00	\$89.25 - Waitlist Only
Sandoval Garage	\$68.25	\$21.00	\$89.25 - Waitlist Only
SFCCC Garage	\$68.25	\$21.00	\$89.25 - Waitlist Only
Railyard Garage	\$68.25	\$21.00	\$89.25



## SANTA FE MUNICIPAL AIRPORT (SAF)

[www.santafenm.gov/airport](http://www.santafenm.gov/airport)

The Santa Fe Municipal Airport offers daily commercial flights that connect to Dallas, Denver and Phoenix.

### American Airlines

Offers daily nonstop flight service to Dallas/Ft. Worth (DFW) and Phoenix (PHX).

Reservations: [800-433-7300](tel:800-433-7300)

Lost Baggage Claim: [800-535-5225](tel:800-535-5225)

### United Airlines

Offers daily nonstop flight service to Denver (DEN).

Reservations: [800-864-8331](tel:800-864-8331)

Lost Baggage Claim: [800-335-2247](tel:800-335-2247)

### TERMINAL SERVICES

The Terminal Building offers a variety of services for the traveling public. Amenities include refreshments and snacks, airline ticket counters, airline self-serve kiosks, baggage claim, rental car counters, airport shuttle, restrooms, vending machines, information displays and flyers, and the airport management offices.

### AIRPORT SHUTTLE

[www.rideroadrunner.com](http://www.rideroadrunner.com) | [\(505\) 424-3367](tel:505-424-3367)

RoadRunner Shuttle is located inside the airport terminal for your convenience. They offer 10 and 14 passenger vans, suburban SUVs, 23-41 passenger mini-coaches, and an ADA mini-coach with 2 wheelchair spaces and 12 passenger seats. Call for reservations.

### RENTAL CARS

Two rental car companies are located inside the airport terminal for your convenience.

#### Avis Rent-A-Car

Reservations: [800-230-4898](tel:800-230-4898)

#### Hertz Rent-A-Car

Reservations US, Puerto Rico, Canada: [800-654-3131](tel:800-654-3131)

Reservations International: [800-654-3001](tel:800-654-3001)

#### New Mexico Black Car Service

Reservations: [505-316-1100](tel:505-316-1100)



Santa Fe Valet & Limousine

Reservations: [505-424-2171](tel:505-424-2171)

#### AIRPORT PARKING

The Santa Fe Municipal Airport offers convenient and affordable parking just steps away from the Passenger Terminal. A flat pre-paid fee of \$3 a day. Disabled parking is available and is conveniently located across from the Terminal.

#### How to Pay

Parking has to be pre-paid regardless of the length of time spent in the parking lots. Locate any one of the four Pay-Stations to pay. The Pay-Stations accept credit and debit cards as well as dollar bills and coins. **Pay-Stations do NOT give change.** Upon full payment, get a receipt from the Pay-Station and place this receipt on your vehicle's dashboard face up in the front of the steering wheel. Lock your car and never leave any packages, luggage or other valuables in plain sight inside your vehicle.



## ELECTRIC SERVICE

[www.pnm.com](http://www.pnm.com) | (505) 241-2700 | 888-342-5766

### PNM

414 Silver Avenue. SW | Albuquerque, NM 87102

The state's largest electricity provider, PNM serves more than 525,000 New Mexico residential and business customers in greater Albuquerque, Rio Rancho, Los Lunas and Belen, Santa Fe, Las Vegas, Alamogordo, Ruidoso, Silver City, Deming, Bayard, Lordsburg and Clayton.

### MOVE IN / START SERVICE

Customers can start service or add another PNM account in five easy online steps. Customers should complete this process at least 3 business days before they plan to move in to ensure service is established in time for moving day.

If a customer is moving to another address served by PNM, choose the Transfer Service option to stop service at the old location and start service at the new location, in one step.

To start service, you will need:

*Address where you want the service*

*Preferred start date*

*Social security number*

About deposits and other important information:

Customers may be charged a deposit. The amount will typically be 1/6 of the total amount of electricity used in the last 12 months at the address you are moving to.

A \$7 connection fee will be added to your first bill or \$11 if electricity is off.

### Mailed Payments

P.O. Box 27900 | Albuquerque, NM 87125-7900

### To Pay by Phone 24/7

[844-766-7968](tel:844-766-7968)

Call Kubra EZPay<sup>®</sup> payment services for PNM.

### To Pay in Person

Pay in person at a Western Union or at one of PNM's walk-in payment centers.

### Automatic Payment

Put your payment on autopilot with Automatic Payment. PNM will deduct it from your bank account on the day it is due.

## CUSTOMER SERVICE

888-DIAL-PNM | 888-342-5766

Best time to call: Tues. - Thurs. 9:30 a.m. - 4 p.m.

Hours: Weekdays, 7:30 a.m. to 6 p.m.

## ENERGY PROGRAMS

**PNM Home Energy Checkup**

An energy specialist meets with homeowners virtually or in home to provide users with a custom home energy report and offers energy-saving devices. Learn ways to become more energy efficient and lower energy costs. Visit [PNM.com/checkup](https://www.pnm.com/checkup)

**Instant Discounts**

Get a discount at the register just by purchasing ENERGY STAR energy-efficient devices that homeowners already use at home. Go to any participating retailer and look for the PNM logo. Visit [PNM.com/InstantDiscounts](https://www.pnm.com/InstantDiscounts)

**PNM Power Saver**

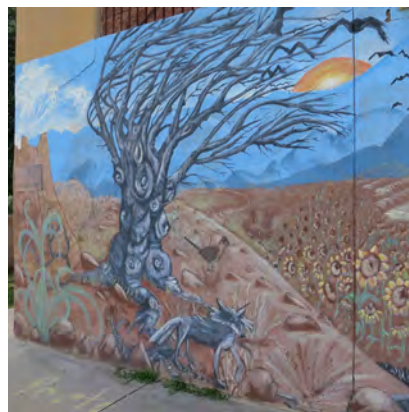
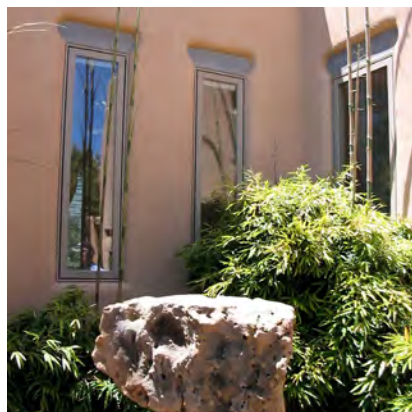
Help PNM manage the flow of energy and relieve times of high electricity demand in our community during hot summer weekday afternoons. New customers receive a one-time \$25 check for signing up and an annual \$25 Thank You check for each participating year. Visit [pnmpowersaver.com](https://www.pnmpowersaver.com)

**PNM Cooling Rebates**

Homeowners can get rebates up to \$300 on qualified energy-efficient evaporative and refrigerated air condition units, and window-mounted units purchased and installed. Visit [pnm.com/coolrebate](https://www.pnm.com/coolrebate)

**Refrigerator Recycling**

Get \$75 just for recycling an old working refrigerator or freezer. PNM will pick it up for free, recycle it properly, and mail a check for \$75 in about 4-6 weeks. Visit [PNM.com/fridge](https://www.pnm.com/fridge) or call 877-838-1139.



## SOLAR AND WIND ENERGY PROGRAMS

### **PNM Sky Blue**

Customers have the power to create a cleaner energy future by subscribing to PNM Sky Blue for just a few extra dollars a month. The more customers that participate, the more wind and solar energy PNM can bring to New Mexico.

### **Customer Solar Energy Program**

PNM provides incentives to customers who install qualified solar energy systems and integrate them into the PNM grid.

### **Other Renewable Projects**

Learn about how to interconnect other types of renewables to the grid.

Customer Solar Programs: [\(505\) 241-2750](tel:5052412750)

## HOME SERVICES

PNM provides a wide range of services to assist customers.

### **Manage Alerts**

Customers can stay informed by setting up Outage Alerts, Payment Reminders and Budget Billing Notifications online. Choose to receive messages by text, email or automated phone call.

### **Submit Meter Read**

Submit your meter reading online or by mail. Plus learn how to read your meter.

### **Call Before You Dig - Dial 811**

Safety is PNM's top priority. Always call before digging on your property.

### **For Landlords**

Find out how to manage your standby contract.

### **Smart Shop ([pnm-smartshop.bidgely.com](http://pnm-smartshop.bidgely.com))**

PNM has complied information on buying new appliances. Products include Smart thermostats; central heating and heat pumps; central air conditioning; room and window ACs; AC and furnace filters; water heaters; LED lighting; Smart power strips; Smart plugs; Smart Home ceiling and portable fans; clothes dryers; clothes washers; dishwashers; electric ovens and ranges; refrigerators; microwaves; pool pumps; and EV chargers.



## GAS SERVICE

[www.nmgco.com](http://www.nmgco.com) | [888-NM-GAS-CO \(888-664-2726\)](tel:888-NM-GAS-CO)

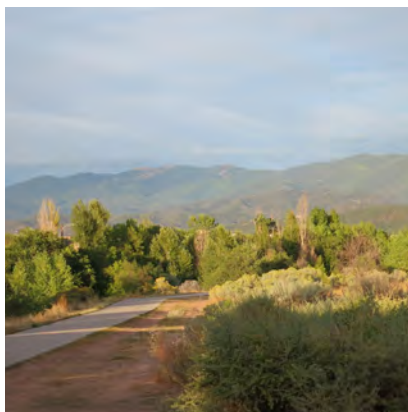
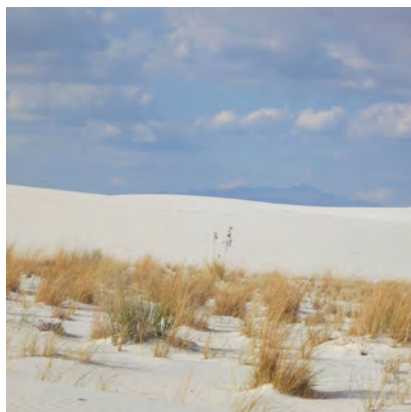
New Mexico Gas Company is the largest utility in the state. The company maintains 12,000 miles of natural gas pipeline to provide service to 540,000 customers.

To start or transfer natural gas service, contact New Mexico Gas Company Customer Service toll free at [888-NM-GAS-CO \(888-664-2726\)](tel:888-NM-GAS-CO). Call Center is open from 7:30 a.m. to 6 p.m. weekdays. Or, stop in at any New Mexico Gas Company Business Office during regular business hours. In Santa Fe, the business office is located at 1700-C St. Michaels Drive, Suite 110 87505, Walk-in Hours: Mon. — Fri. 8:30am - 4:30pm.

Service is scheduled on an as-available basis, so contact us as soon as you know you are moving so that they may schedule service for you. Call at least three days before you need the service to begin. Service appointments are usually all-day, but they may sometimes be able to make other arrangements.

A service technician will need access to your gas meter and, sometimes, may also need access inside the building. The building must be open and vacant with the meter accessible, or an adult at least 18 years of age may provide access to the premises. Other access arrangements may be able to be made through your customer service representative. Customers are asked to eliminate safety risks, such as a dog that may prevent safe access to the meter.

If your natural gas service has been interrupted for any reason and you would like to resume service, please contact Customer Service toll free at [888-NM-GAS-CO \(888-664-2726\)](tel:888-NM-GAS-CO) between 7:30 a.m. and 6 p.m. weekdays. Or, you may stop in at any New Mexico Gas Company Business Office during regular business hours.



**To pay your bill:**

New Mexico Gas Company

PO Box 27885 | Albuquerque, NM 87125-7885

Customers may also choose the most convenient way to receive and pay bills at ([www.nmgco.com/en/about\\_your\\_bill](http://www.nmgco.com/en/about_your_bill)). At Pay My Bill you can:

*Sign up for paperless billing and receive your bill online*

*Pay your bills electronically or sign up for one of their payment programs*

*View your current and past bills online and print out copies*

*Access up to a one-year history of your bill payments and gas usage*

*Sign up for Paperless Billing*

*Request a letter of credit*

New Mexico Gas Company customers are provided a bill each month, although the billing cycle usually overlaps two months (for example, November 15 through December 15). Customers have 20 days after the bill is issued to pay.

**PROGRAMS****Home Repair and Energy Efficiency Program**

MFA's NM EnergySmart Weatherization Program makes homes more comfortable and more energy efficient at no cost to customers. To learn more about the program, visit:

<https://housingnm.org/home-repair-and-energy-efficiency>

**Energy Efficiency Rebate Programs** [www.nmgco.com/en/residential\\_rebate\\_programs](http://www.nmgco.com/en/residential_rebate_programs)

New Mexico Gas Company has five residential energy efficiency programs to help clients save energy and money.

**Free High Efficiency Showerhead Kit**

Quantities are limited and available on a first-come, first-served basis. Only residential customers who receive natural gas service from New Mexico Gas Company and have an active customer account number are eligible. Please allow 6-8 weeks for application approval and delivery. The kit will include up to (2) high efficiency showerheads with three spray settings (wide coverage, soft and massage) and (3) high efficiency faucet aerators.

**Insulation Rebate**

A rebate for 25% of the cost, up to \$500, when you have a licensed and insured participating contractor add insulation to your home's attic or roof. Insulation added between April 1, 2022 and March 31, 2023 is available for rebates with our 2022 program.

**Water Heating Rebate**

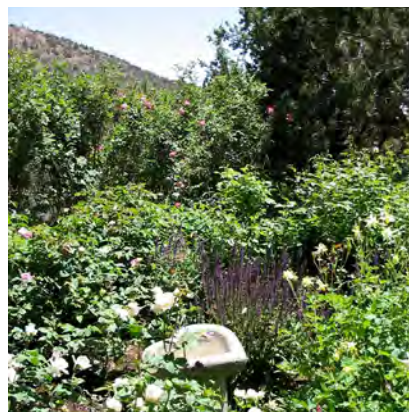
A rebate for \$100 to \$300 when you have a licensed and insured participating contractor install a high efficiency, ENERGY STAR certified tankless or condensing water heater with a Uniform Energy Factor of .87 or .90 or greater in your home. Qualifying water heaters installed between April 1, 2022 and March 31, 2023 are available for rebates with our 2022 program.

**Space Heating Rebate**

A rebate from \$200 to \$375 when you have a licensed and insured participating contractor install a high efficiency gas furnace or boiler with an annual fuel utilization efficiency (AFUE) rating of 92% or higher in your home. Qualifying furnaces or boilers installed between April 1, 2022 and March 31, 2023 are available for rebates with our 2022 program.

**Smart Thermostat Rebate**

Install an ENERGY STAR smart, thermostat to help you save up to \$180 per year - plus a \$50 rebate from NMGC. Qualifying products must be installed or completed between April 1, 2022 to March 30, 2023. Visit <https://www.nmgcgetrebates.com/smart-thermostat> to learn more about the program, access a list of qualifying products and the rebate form.



## CITY TRASH & RECYCLING

[www.santafenm.gov/trash\\_and\\_recycling](http://www.santafenm.gov/trash_and_recycling)

Residential curbside service is provided weekly using City-issued rolling carts. One 65- or 96-gallon green container and one 65-gallon blue recycling cart are provided to all residences. Residents place the containers at the curb and once a week the containers are emptied by an automated side-load refuse truck. Low income residents may qualify for reduced rates. Access the Low Income Credit Application.

Missed Trash Service: Call (505) 955-2200 to reschedule

Large Item Pickup Service Fee: \$33.33 for 8 cubic yards or less. To schedule, call: (505) 955-2200

Bag tags must be used when placing additional bags out for collection that exceed the provided cart. Bag tags may be purchased at the Utility Billing or order by calling (505) 955-4333 then picked up at 801 West San Mateo Road. Bag tags are sold in sheets of 5 for \$7.50. Securely tied bags must be placed curbside by 7:00 a.m. on the collection day.

### CITY TRASH DROP OFF AND RECYCLING

(505) 820-0208 | 2600 Buckman Road

Refuse and recycling may be taken to Buckman Road and Recycling Transfer Station (BuRRT) from 8am to 4:45pm every day.

### CURBSIDE RECYCLING

One large blue recycling cart is provided to all residences and should be placed at least 3 feet from trash containers. Items that may be recycled include:

Mixed Paper, Newspaper, Boxes and Cardboard Break down cardboard & avoid wedging.

Food and Beverage Cartons. Empty and replace cap.

Aluminum and Steel Cans. Empty and rinse.

Kitchen, Laundry, Bath Bottles and Containers. Empty and replace cap.

*Remember:*

*No recyclables in plastic bags.*

*No plastic bags.*

*No food or liquid. No tangles (no hoses, wire, chains or electric cords).*

*No Glass - Glass bottles and jars should be recycled separately from mixed recycling at City recycling drop-off centers at [https://www.santafenm.gov/recycling\\_locations2](https://www.santafenm.gov/recycling_locations2)*

Questions: Call (505) 955-2200 or visit: [www.santafenm.gov/trash\\_and\\_recycling](http://www.santafenm.gov/trash_and_recycling)



## CITY SEWER SERVICE

[www.santafenm.gov/wastewater\\_division](http://www.santafenm.gov/wastewater_division)

Connection to the City of Santa Fe sanitary sewer system is mandatory when the property is in the City limits and is being developed or improved and is accessible to the City sanitary sewer system. Accessible to the City sanitary sewer system means a property: (1) which abuts or is within two hundred feet (200') of the City sewer system or is within two hundred feet (200') of the boundaries of a public street or sanitary sewer utility easement which contains the City sanitary system; and (2) which may physically connect to the City sewer by means of either a gravity or pressure sewer line.

### Sewer Rates Residential

Monthly Service Fee: \$7.53/unit

Usage Fee: \$4.64 per 1000 gallons of water

### To Report Sewer Line Backup or Overflow

(505) 955-4650

Monday - Friday: 8:00 a.m. to 5:00 p.m.

After Hours Weekends or Holidays

(505) 955-4666 or (505) 955-4650

## COUNTY SOLID WASTE (TRASH) & RECYCLING

[www.santafecountynm.gov/public\\_works/trash\\_and\\_recycling](http://www.santafecountynm.gov/public_works/trash_and_recycling)

Santa Fe County Solid Waste manages seven, convenient trash and recycling drop-off locations. Residents and businesses that generate less than 850 pounds of trash per month may use the solid waste convenience centers by purchasing permits or bag tags by completing a [permit application](#) and dropping it off at the County's Treasurer's Office, Public Works Complex, or satellite offices in Edgewood, Eldorado or Pojoaque. Recycling is mandatory and any convenience center user placing accepted recyclable material in trash bins may be issued a warning and/or a citation. Fines range from \$25 to \$200.



Eldorado US 285

OPEN Wed-Sat: 8am to 5pm; Sun: 8am to 1pm

Jacona NM 502/Los Alamos Highway

OPEN Wed-Sat: 8am to 5pm; Sun: 8am to 1pm

La Cienega West Side of CR 54B

OPEN Wednesday: 8am to 5pm

Nambe West Side of CR 503

OPEN Wed, Fri & Sat: 8am to 5pm

San Marcos South Side of CR 42

OPEN Wed, Fri & Sat: 8am to 5pm

Stanley South Side of CR 14A

OPEN Wed-Sun: 8am to 5pm

Tesuque East Side of NM 592

OPEN Wed, Fri & Sat: 8am to 5pm

Rancho Viejo Recycling Center

OPEN Fri-Sat: 8:30am to 4:30pm

Map of Santa Fe Solid Waste Convenience Centers:

[https://www.santafecountynm.gov/media/files/CollectionCenters\\_Jan11\\_2018\\_Final\\_ReducedSize.pdf](https://www.santafecountynm.gov/media/files/CollectionCenters_Jan11_2018_Final_ReducedSize.pdf)

County Recycling Accepted Materials Information:

[https://www.santafecountynm.gov/public\\_works/trash\\_and\\_recycling/recycling](https://www.santafecountynm.gov/public_works/trash_and_recycling/recycling)

### Illegal Dumping

Santa Fe County prohibits the dumping, accumulating or scattering of solid waste. Any person convicted of illegal dumping will be guilty of a crime. First time offenders maybe penalized with a fine up to \$500 and/or 60 days in jail. Subsequent violations carry a penalty of up to \$1,000 and/or 90 days in jail. The improper or illegal disposal of hazardous waste carries a penalty of up to \$5,000 and/or 90 days in jail.

To report illegal dumping or littering, please call the Solid Waste Compliance Officer at (505) 629-2937.



## CITY WATER SERVICE

[www.santafenm.gov/water\\_division](http://www.santafenm.gov/water_division)

The City of Santa Fe Water provides water service to customers in its utility district area.

**New Property Owners** must submit a [New Owner Account Transfer Form](#) with a copy of their Warranty Deed, received from their title company on the day of closing. Property owners having made a direct purchase must provide a copy of their Settlement Statement. The New Owner Account Transfer Form MAY NOT be submitted on line at this time. Customers may complete it on line (or print and complete it) and submit it by mail or by using the Drop Box in the parking of the Utility Billing and Water Divisions building. If a customer is able to scan the document, they may submit by email to [utilitycustomerservice@santafenm.gov](mailto:utilitycustomerservice@santafenm.gov)

STARTING OR TRANSFERRING SERVICES - BUYER. Starting or transferring service in connection with the purchase of a property requires submission of 1) completed [New Owner Account Transfer Form](#) signed by Buyer and Seller (incomplete, inaccurate, illegible and/or unsigned documents will not be accepted or processed); 2) a copy of the recorded deed that transfers title to the property subject to the account transfer request (which may be obtained from the Santa Fe County Clerk's office or from a local title company); 3) a copy of a valid government issued photo ID (e.g., Social Security card, drivers license, passport, state-issued ID card, military ID); and 4) full payment of ANY past due balance(s) in the Buyers' name for utility services provided to Buyer at other addresses within the City of Santa Fe.

STARTING SERVICES - SELLER. Starting or transferring service in connection with the sale of a property requires submission of: 1) completed [New Owner Account Transfer Form](#) signed by Buyer and Seller (incomplete, inaccurate, illegible and or unsigned documents will not be accepted or processed). This includes providing a forwarding address and agreement to pay the seller's final utility bill; 2) a copy of a valid government issued photo ID (e.g., Social Security card, drivers license, passport, state-issued ID card, military ID); and 3) full payment of ANY past due balances(s) in the Buyers' name for utility services provided to Buyer at other addresses within the City of Santa Fe.

STARTING SERVICES - SELLER. Stopping or transferring service in connection with the sale of a property requires submission of: 1) completed New Owner Account Transfer Form signed by Buyer and Seller (incomplete, inaccurate, illegible and or unsigned documents will not be accepted or processed). This includes providing a forwarding address and agreement to pay the seller's final utility bill. Seller and Buyer must coordinate with each other to ensure that a single completed and signed form is submitted to the Utility Billing Division.

**Tenants** must sign and complete their portion of the [Release of Liability and Utility Services Application](#) and attach copies of the following documents with submittal to have the utility services account in their name(s). The copies of the following documents must be attached: 1) signed lease agreement with a minimum term of six (6) months; 2) valid driver's license or other valid government issued photo ID. A customer service representative will contact the tenant after receiving the application to notify them of the deposit amount. **Property owners leasing property** must sign and complete their portion of the Release of Liability and Utility Services Application. The property owners account and previous tenant accounts must have a zero balance. The property owner name on the lease must be consistent with County Records. The account will revert to the owner upon the tenant move-out date.

Use the electronic forms found on [www.santafenm.gov/forms](http://www.santafenm.gov/forms) to start, update or stop services to an existing water service account and apply for adjustment to a utility bill due to a leak or unknown cause.

#### PAY WATER UTILITY BILLS

##### **By U.S. Mail**

Utility Billing Division

801 West San Mateo | Santa Fe, NM 87505

##### **In Person**

Utility Billing Division

801 West San Mateo | Santa Fe, NM 87505

Or

Dropping the payment in the Drop Box (parking lot)

##### **Phone | Online**

(505) 955-6100 | <https://santafenm.gov/paymentus>





## WATER REBATES AND INCENTIVES

The City of Santa Fe Water offers a variety of incentives and rebates to encourage customers to conserve water by replacing high water use fixtures and appliances with more efficient technologies. Please note: The rebates do not apply to purchases for new homes or new construction and development.

### To Qualify

Any applicant must be a City of Santa Fe Water customer with an account in their name at the service address where the appliance or fixture is installed and at time of purchase. Applications must be submitted within 90 days of purchase. Receipts must be attached. Applications without receipts will be denied.

### Indoor Rebates Include

High-efficiency clothes washer rebates, including both EnergyStar certified and Consortium for Energy Efficiency Tiers 2 and 3 machines.

High-efficiency toilet (HET) rebates including WaterSense labeled 1.28 gallon per flush (gpf) and 0.88 gpf models.

Dishwashers.

Complete rebate applications typically take 60-90 days to process. The rebate will be applied to the customer's City of Santa Fe utility bill.

### Outdoor Rebates Include

New irrigation equipment and system installations.

Laundry to landscape gray water systems.

Rain barrel catchment

Visit the Water Use Restrictions website learn when and how to water in order to conserve water and avoid water use violation fees.

## Frequently Asked Questions

What should I do if I have a leak?

If your home has a water shut-off valve, turn the water off.

Who should I call about a leak?

If the leak is near the water meter, contact Customer Service and Utility Billing at (505) 955-4333. If the leak is in your home or elsewhere on your property, call a plumber.

How do I turn my water off when:

(1) I have a water emergency (if property damage will occur if water is not shut off immediately)? OR (2) I am doing planned plumbing work and need to verify a leak?

For customer service, please call (505) 955-4333.

### **To Report Water Emergencies only**

To report water leak, water main break or frozen meter: (505) 955-4333

## **COUNTY WATER AND WASTE WATER SERVICES**

[www.santafecountynm.gov/public\\_works/utilities](http://www.santafecountynm.gov/public_works/utilities)

Santa Fe County Water/Wastewater Operations

Physical Address: 424 NM 599 | Santa Fe, NM 87507

Mailing Address: P.O. Box 276 | Santa Fe, NM 87504

Office Hours: Monday - Friday from 8 a.m. - 5 p.m. | Closed on weekends and County Holidays

### **Payment Options**

The County has four ways to accept your water and wastewater bill payment.

Money Orders and checks are accepted at the Public Works facility (424 NM 599) from 8 am to 5 pm, Monday through Friday except Santa Fe County holidays.

The Payment Drop Box is available at the Public Works facility 24 hours per day, 7 days a week. The Payment Drop Box is located in the front entrance by the fuel pumps.

Customers may mail in their checks to:

Santa Fe County Water/Wastewater Operations | P.O. Box 276 | Santa Fe, NM 87504

Customers can choose to have their monthly bills debited from their bank accounts. Please fill out the form below and return it to Public Utilities.

<https://www.santafecountynm.gov/media/files/SFCUAuthorizationtoDebit8-2018.pdf>

On June 12, 2018, the Santa Fe County Board of County Commissioners approved new rates for water and wastewater services.

#### County Water Rates 2018

<https://www.santafecountynm.gov/media/files/Utilities/fee%20sheet%209-24-18.pdf>

### REGIONAL SUBSCRIPTIONS (local newspapers)

#### Albuquerque Journal

[www.abqjournal.com](http://www.abqjournal.com)

Online and Print Delivery Services (505) 823-4400

Monday-Friday: 6am-4pm; Saturday-Sunday: 6am to Noon

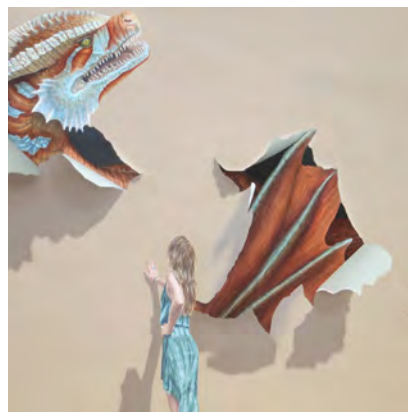
#### Santa Fe New Mexican

[www.santafenewmexican.com](http://www.santafenewmexican.com)

Online and Print Delivery Services (505) 986-3010

#### New Mexico Magazine

[www.nmmagazine.com](http://www.nmmagazine.com) | 800-898-6639



## HOMEOWNER & RESIDENT TIPS

### BIKE AND PEDESTRIAN-FRIENDLY TOURIST TOWN

Santa Fe attracts many tourists who enjoy visiting the region on foot and on bike. Additionally, the City and County of Santa Fe supports and encourage its citizens to bike and walk as part of a healthy lifestyle. With increased foot and bike traffic, many areas have a lot of pedestrians and bicyclists utilizing streets, sidewalks and crosswalks. Please be alert as you drive throughout the area and take extra caution keeping an eye out for pedestrians and bicyclists.

### CELL PHONE RESTRICTIONS

The City of Santa Fe restricts the use of cell phones when vehicles are driven. Hands free devices are permitted. Extra fines are levied for the unlawful use of cell phones in school districts.

### COAL USE

Coal burning is prohibited in the City of Santa Fe except for stoves correctly installed and maintained that the correct fuel type for the stove used is coal.

### JUNK VEHICLES

The City of Santa Fe has determined that junk vehicles are a public nuisance and are defined as inoperative for at least 120 days, do not have a valid license plate, and do not meet the minimum safety standards. Junk vehicles may be tagged by the city and must be removed within 30 days or fines will be levied.

### NOISE

The City of Santa Fe has a noise ordinance with specific details regarding decibel levels for a variety of noise-making equipment, devices and other sounds. Generally, the city requires noise to be controlled from 9 p.m. to 7 a.m.

### PANHANDLING

Panhandling is strictly controlled in the City of Santa Fe and panhandling conducted in an aggressive manner is prohibited.





## REMODELING YOUR HOME

The City of Santa Fe has a Green Remodeling Code that captures both large and small additions and remodeling projects in your home. The Green Remodeling Code has requirements for small additions, bathroom, kitchen and basements remodels in the following areas: Building Thermal Envelope; Air Sealing and Insulation; Recessed Lighting; High-efficiency Lighting; Boiler Supply Piping; Appliances; Gas-fired Equipment; Solid Fuel-burning Appliances; HVAC System Protection; Duct Insulation; Recycling; Universal Design Elements; Showerheads; Faucets; Water Closets; Radon Control; Flashing; Ice Barrier; and Architectural Features. Learn more about the Green Remodeling Code at: [www.santafenm.gov/greenbuildingcode](http://www.santafenm.gov/greenbuildingcode)

## REMOVAL OF SNOW OR ICE FROM SIDEWALKS

The City of Santa Fe requires owners, agents or occupants of any property to keep sidewalks and gutters in front of and adjoining such property clean of snow and ice. After any fall of snow property owners or occupants shall immediately remove snow and ice from the sidewalks and gutters fronting and adjoining their respective lots or parts of lots ensuring that snow and ice is not be placed in the street.

## RENTAL PROPERTY

The Santa Fe Association of REALTORS® offers updated, weekly rental property information for renters. Visit: [www.sfar.com/rentals](http://www.sfar.com/rentals)

## REUSEABLE BAGS OR PAY A 10-CENT SHOPPING BAG CHARGE

The City of Santa Fe has adopted a Reusable Bag Ordinance requiring retail stores to charge a 10-cent fee for every paper bag provided to customers. The ordinance is intended to encourage the use of reusable shopping bags. Stores are not required to charge the 10-cent fee to any person with a voucher or electronic benefits card issued under Women, Infants and Children Program (WIC), the Emergency Food Assistance Program (TEFAP), Temporary Assistance to Needy Families Program (TANF), or the federal Supplemental Nutrition Assistance Program (SNAP, also known as Basic Food Stamps).

## RESIDENTIAL PARKING PERMITS - CITY OF SANTA FE

If citizens live in a designated residential parking permit required neighborhood and they park on the street, citizens are required to obtain annual residential parking permits. These permits are offered free of charge to residents who complete a parking permit application and provide proof of residency (lease agreement, utility bill, etc.) and current vehicles(s) registration. For the convenience of residents, the City of Santa Fe Parking Division offers multiple options to apply for a new residential permit or to renew a current

residential permit. Visit [https://www.santafenm.gov/residential\\_parking\\_permits](https://www.santafenm.gov/residential_parking_permits) to learn more about residential parking policies and procedures, designated streets, and access to permit application forms.

#### SANTA FE FARMER'S MARKET

[www.santafefarmersmarket.com](http://www.santafefarmersmarket.com)

Visit and support the local farmer's markets at the Railyard and Southside

#### Saturday Market in the Railyard

Summer hours: 7am-1pm (June-September)

Winter hours: 8am-1pm

#### Tuesday Market in the Railyard

May thru November

Hours: 8am-1pm

#### Tuesday Del Sur Market at Presbyterian Medical Center, 4801 Beckner Road

July thru September on Tuesdays

Hours: 3pm-6pm

#### SMOKEFREE SANTA FE

Smoking is prohibited in all enclosed public places within the City of Santa Fe, within 25 feet of any opening into an enclosed area and all enclosed places of employment.

Smoking is not regulated in private residences, hotel or motel rooms that allow smoking, parking lots, and cigar or vaping bars.

#### USING YOUR HOME AS A VACATION RENTAL

The City of Santa Fe regulates short term rentals. If you plan to rent your property on a weekly basis, you must obtain a permit from the City of Santa Fe. Other restrictions apply including: neighborhood notification; safety inspection; \$100 application fee; \$290



annual permit fee; rental period limit of 7 days; parking requirement; water conservation requirement; occupancy limit; limit on outside activity by renters; density control; 24-hour owner access; must pay income, lodger's and gross receipts taxes; maintain records; use permit number in all advertising; and provide proof of insurance. Permits are available to property owners in commercial districts and certain resort communities with an annual permit fee of \$100. Up to 1000 residential permits are available to property owners. Property owners are required to list the permit number on website listings. Strong enforcement provisions are provided to ensure compliance.

Contact the Short Term Rental Office for more information at (505) 955-4663 or (505) 955-6336 and by email at [shorttermrental@santafenm.gov](mailto:shorttermrental@santafenm.gov).

#### WEED CONTROL

To control potential fire hazards in the City of Santa Fe, It is unlawful for any property owner or occupant to allow weeds to grow more than 12" or a stem of 2".

To review the complete city laws pertaining to the outline above, visit Santa Fe City Code – Public Safety & Environmental Laws



## AFFORDABLE HOUSING

Many of the affordable housing programs in the Santa Fe area have income eligibility requirements. Housing is typically considered “affordable” if a family pays no more than one-third of their monthly income for their housing costs, including rent and utilities or a mortgage, taxes, insurance and utilities.

Every year the U.S. Department of Housing and Urban Development (HUD) establishes the Area Median Income (AMI) for every metropolitan jurisdiction and non-metropolitan county in the United States. The calculation considers estimates from the American Community Survey (ACS), Consumer Price Index (CPI), Inflation and Trend Factor, and a Margin of Error Factor. The AMI is also adjusted by family size – the bigger the family, the higher the income limit.

### 2021 Area Median Income (AMI) Levels for Santa Fe County

2021	100% AMI	80% AMI	65% AMI	50% AMI
AMI 1 Person	\$51,150	\$40,900	\$33,250	\$25,550
AMI 2 Person	\$58,450	\$46,750	\$38,000	\$29,200
AMI 3 Person	\$65,750	\$52,600	\$42,750	\$32,850
AMI 4 Person	\$73,000	\$58,400	\$47,450	\$36,500
AMI 5 Person	\$78,900	\$63,100	\$51,300	\$39,450

## SANTA FE CITY – OFFICE OF AFFORDABLE HOUSING

[www.santafenm.gov/affordable\\_housing](http://www.santafenm.gov/affordable_housing) | (505) 955-6346

500 Market Street, Suite 200 | Santa Fe, NM 87501

The City of Santa Fe provides administrative funding to its nonprofit partners through local funds to build the on-the-ground capacity of these groups to provide housing services, support, and real estate development. Through capacity building, technical assistance, and regulatory mechanisms, the City has built a network of strong cooperation and assistance among various nonprofit agencies, other government agencies, and private sector builders.

The office administers the Santa Fe Homes Program (formerly called the Housing Opportunity Program), which mandates that 20% of all new developments are priced affordably for homeownership and 15% of proposed rental homes have affordable rents. The office passes through HUD Shelter Plus Care funds to assist eligible clients (homeless, mental health challenges, or disabled) with rental subsidies; allocates downpayment

assistance fund to homebuyers with less than 120% of area median income through the City's Affordable Housing Trust Fund and through the federal Community Development Block Grant Program; and provides home rehabilitation funds from the federal Community Development Block Grant Program to Homewise and Santa Fe Habitat for Humanity to support home repair loans for qualified homeowners.

## **SANTA FE CIVIC HOUSING AUTHORITY**

(505) 988-2859

664 Alta Vista Street | Santa Fe, NM 87505

Provides housing services for low income residents.

Provides 1,000 Housing Choice Vouchers (formerly Section 8).

Owens 28 public housing rental units in Santa Fe and 178 in Espanola.

General partner in 457 project-based units in Santa Fe.

General partner in 376 low income housing tax credit apartments targeting <60% AMI clients.

Owens 32 units funded under HUD Section 202 program which provides homes for the elderly, including many with extremely low incomes or significant health concerns.

Owens 49 market rate units (includes 2 units for police officers), all currently affordable.

Owens group homes for the disabled in Santa Fe and Las Vegas.

Operates in Town of Bernalillo, Rio Rancho, Sandoval County, Mora County, Los Alamos County, City of Espanola and City of Santa Fe.

Finishing March 2022 construction on 45 unit LIHTC project in Santa Fe for <60 AMI tenants





## SANTA FE COUNTY AFFORDABLE HOUSING

[www.santafecountynm.gov/growth\\_management/affordable\\_housing](http://www.santafecountynm.gov/growth_management/affordable_housing) | (505) 986-6264

The mission of the County's Affordable Housing Program is to provide increased affordable housing opportunities to workforce families throughout the County. The Affordable Housing Program includes down payment assistance, roof repair and replacement, and foreclosure prevention. Downpayment assistance for homebuyers is available, up to \$20,000 for households with incomes at or under 65% of AMI; up to \$15,000 for households with AMI of 65%-80%; and up to \$10,000 for households with 80%-100% of AMI.

**Down Payment Assistance** in the form of zero percent, non-amortizing deferred payment loans are available from the County. Assistance up to \$20,000 is available for households with incomes at or under 65% of AMI; up to \$15,000 for households with AMI of 65%-80%; and up to \$10,000 for households with 80%-100% of AMI. Applicants must be a first-time homebuyer, must have received homebuyer education, must have received mortgage loan approval pending receipt of the County assistance and must have prepared a realistic household budget. Visit the website to access the Downpayment Assistance Application.

**Roof Repair and Replacement Program (Happy Roofs Program)** offered through the County provides funds for the repair or replacement of roofs that have severe problems which threaten the health and safety of residents. Assistance is in the form of a zero percent interest loan which is non-amortizing and forgiven after 10 years. The loan amount is up to \$14,000 and is secured by a note and mortgage. Applicants are required to complete an application and certification. County staff reviews the information to determine if the applicant is income eligible. The individual must be low income (>80% AMI), as established by the New Mexico Mortgage Finance Authority and the Department of Housing and Urban Development. Visit the website to access the application.

The County administers a **Foreclosure Prevention Program** to prevent foreclosure of a home purchased under the Affordable Housing Program and for which the County holds an Affordability Mortgage and Lien. The County has five tools which it uses to prevent foreclosure: 1) assist homeowner in seeking a refinance of an existing loan from the first mortgage lender; 2) assist homeowner in securing a loan modification from the first mortgage lender; 3) grant emergency short-term mortgage assistance per program requirements in cases of job loss or other severe economic hardships; 4) arrange a

voluntary sale to another income qualified buyer meeting program requirements; and 5) purchase the home.

## **SANTA FE COUNTY HOUSING AUTHORITY**

[www.santafecountynm.gov/housing\\_services](http://www.santafecountynm.gov/housing_services) | (505) 992-3060

52 Camino de Jacobo | Santa Fe, NM 87507

Manages 198 public housing units and 241 Housing Choice Vouchers (previously called Section 8.)

Manages HUD Veterans Affairs Supportive Housing Vouchers that combine rental assistance for homeless veterans with case management services provided by the Department of Veterans Affairs.

Manages a mainstream voucher program which provides assistance to below age 62 and disabled.

Manages a HUD ROSS (Resident Opportunities and Self-Sufficiency) program offering case management to become self-sufficient for public housing tenants.

Manages a Homeownership Voucher Program in which a voucher subsidy is used to provide assistance to a first time homebuyer with mortgage payments, instead of with rent assistance.

Provides a Family Self-Sufficiency Program for existing public housing residents and Housing Choice Voucher participants. Funds are deposited into an escrow account for each family when there is an increase to the family's earned income and, at the end of the contractual five year period, successful participants receive the balance in the escrow account.

## **SANTA FE HOUSING ACTION COALITION**

<https://santafehousingaction.org> |

The Santa Fe Housing Action Coalition is a broad-based community coalition dedicated to expanding the accessibility and affordability of quality housing options in Santa Fe through systemic change that benefits all residents.



## HOMEWISE

[www.homewise.org](http://www.homewise.org) | (505) 983-9473

1301 Siler Road, Building D | Santa Fe, NM 87507

The Homewise mission is to help create successful homeowners and strengthen neighborhoods so that individuals and families can improve their long-term financial well-being and quality of life. Assistance available through Homewise includes:

- Down payments as low as 2%

- Down payment assistance

- Affordable homes throughout the Santa Fe area

- Mortgages with low interest and fixed rates

- No mortgage insurance

- FREE Financial Fitness workshops to help individuals create financial goals, learn how to make wise financial choices, reduce or eliminate debt, repair and improve your credit, build savings for planned and unexpected expenses, develop a budget and gain confidence around money issues

- Refinancing services

- Financing for Home Improvements such as roof repair or replacement, stucco, windows and doors, high-efficiency furnaces, solar electric, solar hot water, water catchment and drip irrigation systems, and disability modifications.

## SANTA FE HABITAT FOR HUMANITY

<https://www.santafehabitat.org> | (505) 986-5880

2520 Camino Entrada | Santa Fe, NM 87507

Santa Fe Habitat for Humanity works with future homeowners and volunteers working side-by-side to build Habitat homes. All applicants are required to provide rental and employment verification information as well as a statement of need for a simple, decent and affordable home. When a family's application is approved, they must work a minimum of 350 to 500 hours of "sweat equity" depending upon their family make-up. Families are required to invest their own time and labor building Habitat homes and structured savings for a down payment as well as attending classes designed to prepare them for homeownership. Applicant's eligibility is based on income levels or 80% of the AMI for Santa Fe County. Repairs and renovates homes through New Mexico Mortgage Finance Authority's "House by House" program based on income eligibility requirements.

Santa Fe Habitat for Humanity offers a ReStore selling donated new and used building

materials, gently used furniture, appliances and household items to the public. The ReStore Tool Lending Library allows people to borrow tools to maintain and improve their homes.

## THE SANTA FE COMMUNITY HOUSING TRUST

[www.housingtrustonline.org](http://www.housingtrustonline.org) | (505) 989-3960

1111 Agua Fria Street | Santa Fe, NM 87501

The Santa Fe Community Housing Trust is a nonprofit community development organization that assists residents of northern New Mexico to gain access to affordable housing. They partner with residents to make the biggest purchase of their lives and all that entails. Over the years, they have helped more than 1,500 people achieve the dream of homeownership by providing technical and financial assistance to low- and moderate-income households, as well as building well-designed, energy-efficient affordable homes.

### SOLERAS STATION

<https://housingtrustonline.org/soleras/> | (505) 989-3960

Los Soleras Subdivision | Santa Fe, NM 87507

An 87 unit family-focused development available to all individuals including low- and moderate-income Santa Fe families including those with special needs and transitioning out of homelessness..

### VILLAGE SAGE APARTMENTS

[www.villagesageapartments.com](http://www.villagesageapartments.com) | (505) 989-3960

5951 Larson Loop | Santa Fe, NM 87507

An award-winning project completed in 2011 by The Housing Trust offers affordable, well-designed housing and stabilization services for low-income and special needs residents.

### ARROYO CENTRAL

[www.arroyocentral.com](http://www.arroyocentral.com) | (505) 989-3960

7241 Plaza Central | Santa Fe, NM 87507

Arroyo Central is located in the thriving and expanding area of southwest Santa Fe and consists of 23 homes with oversized lots and stunning views of New Mexico.

## STAGE COACH APARTMENTS

[www.housingtrustonline.org/affordable-homes/stage-coach-apartments](http://www.housingtrustonline.org/affordable-homes/stage-coach-apartments) | (505) 466-1560  
3360 Cerrillos Road | Santa Fe, NM 87507

The Housing Trust completed the project in 2013, renovating pre-existing structures into 16 apartment units and adding 44 additional units and a large community room clustered around four courtyards. Twenty-five percent of the units are dedicated to people transitioning from homelessness or those with special needs.

## DIRECTORY OF AFFORDABLE HOUSING SERVICES IN THE SANTA FE AREA

## CASA MILAGRO

[www.casamilagrosantafe.org](http://www.casamilagrosantafe.org) | (505) 474-7684  
49 Camino Bajo | Santa Fe, NM 87508

Supportive housing for men and women with mental illness who have experienced homelessness.

## CRISIS CENTER OF NORTHERN NEW MEXICO

[www.crisis-centers.com](http://www.crisis-centers.com) | (505) 753-1656  
577 El Llano Road | Espanola, NM 87532-2911

Provides a Transitional Housing Project to fulfill the needs of domestic violence victims and their children.

## CREATIVE SANTA FE

[www.creativesantafe.org](http://www.creativesantafe.org) | (505) 465-9212

The Arts+Creativity Center, an initiative of Creative Santa Fe, started in 2012 when Creative Santa Fe engaged with Artspace to investigate the possibility of an affordable live/work rental project in Santa Fe. The Artspace Market Study paved the way for an analysis of potential sites for A+CC, which identified a portion of the 53 acres of city-owned land on Siler Road as the best fit. In 2013 New Mexico Inter-Faith Housing joined the project team to serve as the lead developer and applicant for affordable housing development funding.





In August of 2015 the project was awarded a prestigious “Our Town” planning grant from the National Endowment for the Arts. In April of 2016 the City of Santa Fe agreed to donate five acres of land to the project on Siler Road. Visit [www.sileryard.org](http://www.sileryard.org) for more information.

#### ESPERANZA SHELTER FOR BATTERED FAMILIES

[www.esperanzashelter.org](http://www.esperanzashelter.org) | (505) 474-5536 | 800-473-5220

Support Center, 3130 Rufina Street, 87507 | 800-473-5200: Crisis Hotline & Emergency Shelter Services

Emergency Shelter: Esperanza’s emergency residential shelter offers refuge to victims of domestic violence including **help for immigrants** who are threatened with exposure or the individual or their loved ones.

**On-Call Advocacy Program:** Esperanza will provide advocates to sites where law enforcement or medical personnel have encountered a domestic violence situation. The purpose is to give support, referrals and resources to survivors of domestic violence and their children at the most critical time.

**Survivor’s Counseling:** Esperanza’s Residential and Non-Residential programs offer counseling to victims of domestic violence and children. Batterer’s Intervention treatment is offered to court-ordered and self-referred offenders of domestic violence including a new **Path to Peace Program** for those who want to change their abusive behavior.

**Life Skills Education:** Shelter residents are offered skill-building education ranging from nutrition and legal services to educational, employment and housing services.

**Court Advocacy:** Esperanza’s Court Advocates help survivors of domestic violence navigate their ways through the often complex and intimidating judicial system and work to help them understand and receive the protections available to them.

**Community Outreach and Education:** Esperanza offers educational presentations addressing the dynamics and effects of domestic violence and teen dating violence to schools, healthcare providers, service agencies, community organizations, law enforcement and the general public.

#### LIFE LINK

[www.thelifelink.org](http://www.thelifelink.org) | (505) 438-0010

[info@thelifelink.org](mailto:info@thelifelink.org)

2325 Cerrillos Road | Santa Fe, NM 87505

The Life Link has been serving Santa Fe and surrounding areas since 1987. Life Link is committed to providing accessible, culturally appropriate, supportive and effective services to persons experiencing homelessness and/or behavioral health challenges.

Life Link provides supportive housing; mental health support services; substance abuse services, and human trafficking aftercare.

#### NEW MEXICO COALITION TO END HOMELESSNESS

[www.nmceh.org](http://www.nmceh.org) | (505) 982-9000 | Service Entry Phone: (505) 772-0547

440 Cerrillos Road, Suite 4 | Santa Fe, NM 87501

- Develops more housing for homeless people.

- Operates the New Mexico Coordinated Assessment System to match homeless people with the housing and services that will best meet their needs

- Manages the Homeless Management System (HMIS) for the State of New Mexico.

- Educates people in New Mexico about homelessness

- Supports homeless service agencies in New Mexico with workshops, an annual conference, and personalized assistance.

- Places VISTA volunteers at agencies that assist people who are homeless

- Advocates for solutions to homelessness at the local, state, and federal governments

#### NEW MEXICO MORTGAGE FINANCE AUTHORITY

[www.housingnm.org/homebuyers/home-buyers](http://www.housingnm.org/homebuyers/home-buyers) | (505) 843-6880

344 4th Street SW | Albuquerque, NM 87102

The New Mexico Mortgage Finance Authority is a self-supporting quasi-governmental entity that provides financing to make quality affordable housing and other related services available to low- and moderate-income New Mexicans. Using funding from housing bonds, tax credits, and other federal and state agencies, MFA provides resources to build affordable rental communities, rehabilitate aging homes, supply downpayment assistance and affordable mortgages, offer emergency shelter, and administers rental assistance and subsidies. MFA partners with lenders, REALTORS®, nonprofit organizations, local governments, tribal communities and developers throughout the state to make these programs and services available to all eligible New Mexicans.

#### NEW VISTAS/NEW MEXICO CENTER FOR INDEPENDENT LIVING

[www.newvistas.org](http://www.newvistas.org)

Disability Support, Advocacy Program, Administration and Early Childhood Services,  
Santa Fe: (505) 471-1001

[info@newvistas.org](mailto:info@newvistas.org)

1205 Parkway Drive, Suite A | Santa Fe, NM 87507

Partners with and supports people with disabilities and families of children with special needs to enrich their quality of life in New Mexico, providing five core services of

advocacy, independent living skills training, peer support, information and referral, and transition.

#### ST. ELIZABETH'S SHELTER

[www.steshelter.org](http://www.steshelter.org) | (505) 982-6611

804 Alarid Street | Santa Fe, NM 87505

Manages the following programs; a) an emergency shelter for men; b) an emergency shelter for women and families; c) three transitional housing programs for seniors, families and individuals with disabilities, and; d) a weekly legal clinic

#### SALVATION ARMY – SANTA FE

[www.santafe.salvationarmy.org](http://www.santafe.salvationarmy.org) | (505) 988-8054

525 W. Alameda Street | Santa Fe, NM 87501

Provides emergency financial assistance and shelter; food and nutrition programs, transitional housing; worship services; music and art programs; character building programs; day camp activities and residential camping activities.

#### SANTA FE ASSOCIATION OF REALTORS®

[www.sfar.com](http://www.sfar.com) | (505) 982-8385

510 N. Guadalupe Street, Suite E | Santa Fe, NM 87501

Financially supports affordable housing through a local program that provides down payment assistance to veteran's and other qualified families through nonprofit housing organizations, sustained annually by contributions from the Association. Obtains grant funds to provide Affordable Housing education and updates.

#### SANTA FE PUBLIC SCHOOL ADELANTE PROGRAM

[www.sfps.info/page/adelante-program](http://www.sfps.info/page/adelante-program) | (505) 467-2000

Provides bilingual services for children, teens and their families experiencing homelessness in Santa Fe including advocacy, tutoring, evening programs and material aid.

#### SANTA FE AREA HOME BUILDERS ASSOCIATION

[www.sfahba.com](http://www.sfahba.com) | (505) 467-2524

2520 Camino Entrada, Unit B | Santa Fe, NM 87507

A non-profit trade association, serving the areas of Santa Fe and Northern New Mexico,. Represents builders, developers and a wide array of construction-related professionals including architects, landscapers, interior designers, remodelers, finance companies, and construction materials suppliers.

## THE INTERFAITH COMMUNITY SHELTER

[www.interfaithsheltersf.org](http://www.interfaithsheltersf.org) | (505) 795-7494

2801 Cerrillos Road | Santa Fe, NM 87502

In addition to short-term survival services, the Interfaith Community Shelter offers a range of services through partnerships with local service providers who help with counseling, substance abuse, health care, job hunting, veteran support, and legal challenges. These services are available during the day all year long for any low or no-income individual whether he or she is experiencing homelessness or not. Overnight shelter is provided year round for women and children. During winter months, overnight shelter is provided for men, women, and children. Check the shelter's online calendar for days and times.

## SOUTHWEST C.A.R.E. CENTER

[www.southwestcare.org](http://www.southwestcare.org) | (505) 989-8200

649 Harkle Road, Suite E | Santa Fe, NM 87505

Provides services to New Mexicans affected by HIV/AIDS, including health care needs, money management and benefits, insurance issues, housing and nutrition assistance as well as linkage to care.

## TIERRA CONTENTA CORPORATION

(505) 471-4551

6005 Jaguar Drive | Suite 105, Plaza Contenta | Santa Fe, NM 87507

Tierra Contenta is a mixed-use, mixed income community designed to provide low and moderate priced housing for under-served families of Santa Fe that provides builder-ready tracts to production homebuilders and finished lots for small builders and non-profit housing providers. Their goal is to provide at least 40% of the homes affordable by those earning less than 80% of the area median income. When complete, Tierra Contenta will have approximately 4000 homes, plus businesses, schools, community services, parks, and abundant open space.

## VETERANS ADMINISTRATION

[www.va.gov/homeless/](http://www.va.gov/homeless/) | 877-424-3838

If you are a Veteran who has lost your home, the VA can help you get back on your feet. Contact VA's National Call Center for Homeless Veterans at 1-877-4AID-VET (877-424-3838) to speak to a trained VA responder. The hotline and online chat are free and neither VA registration nor enrollment in VA healthcare is required to use either service.

## YOUTH SHELTERS

[www.youthshelters.org](http://www.youthshelters.org) | (505) 983-0586

5686B Agua Fria Street | Santa Fe, NM 87507

Youth Shelters serves homeless, runaway, street youth and their families, as well as young people who are at risk of being homeless.

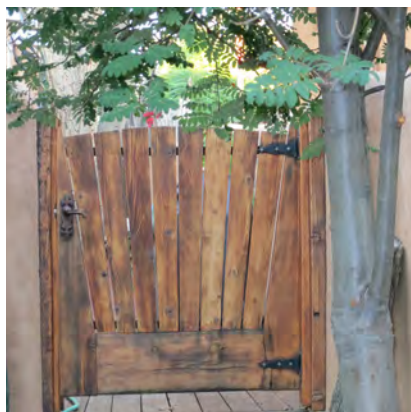
- Provides an **Emergency Shelter**, a 24-hour shelter offering a full range of services to runaway, homeless, and at-risk youth 10–17.
- Provides a **Transitional Living Program** for youth 17 –22, with a full range of independent living skill-building activities.
- Provides **Street Outreach Program Drop-in Center** for youth 21 and under who are experiencing homelessness with showers, hot meals, laundry facilities, computer and phone access.
- Hosts a **Cold Weather Shelter** for youth 18-22 with warm meals, clothing, hygiene items, case management, transportation to and from the shelter and access to housing opportunities.
- Supports a **Rapid Rehousing Program** for unaccompanied youth 18-24 and their dependents whom are offered up to 24 months of rental assistance and case management services with the goal of maintaining permanent housing at discharge.

## YOUTHWORKS! OF SANTA FE

[www.santafeyouthworks.org](http://www.santafeyouthworks.org) | (505) 989-1855

1504 Cerrillos Road | Santa Fe, NM 87505

Founded by Melynn Schuyler in 2001, YouthWorks has emerged as a cutting-edge, innovative organization offering a continuum of services designed to reconnect “at-risk” and disadvantaged youth with our community through education, employment training, and job placement..





## CITY OF SANTA FE HIKING, WALKING AND BIKING TRAILS

The City of Santa Fe has a number of recreational and wilderness trails with easy access for residents and visitors. Nestled within thousands of acres of piñon and juniper woodlands the City's Dale Ball and Connecting Trails and La Tierra Trails provide a network of over 50-miles of hiking and mountain biking trails, these also include some shared multi-use trails for equestrians. The city's wilderness trails connect to other well-known trails in Santa Fe County, the Santa Fe National Forest, and The Nature Conservancy.

Download trail maps below and visit the links provided to access more detailed trail information:

Dale Ball and Connecting Trails Map – 4.7 mg

[www.sfct.org/dale-ball-trails/](http://www.sfct.org/dale-ball-trails/)

La Tierra Trails Map – 3.4 mg

[www.sfct.org/la-tierra-trails/](http://www.sfct.org/la-tierra-trails/)

Santa Fe National Forest

[www.fs.usda.gov/santafe](http://www.fs.usda.gov/santafe)

The Nature Conservancy

[www.nature.org/ourinitiatives/regions/northamerica/unitedstates/newmexico/placesweprotect/santa-fe-canyon-preserve-1.xml](http://www.nature.org/ourinitiatives/regions/northamerica/unitedstates/newmexico/placesweprotect/santa-fe-canyon-preserve-1.xml)

Protect the Wilderness Eco-system

Stay on designated trails.

Dogs must be on a leash at all times.

Equestrians are allowed only on Multi-Use and Arroyo Trails.

ATVs/MX vehicles are not allowed on trails except within the designated ATV/MX Park.

No campfires or open flames.

Safety reminders and recommendations

Bring plenty of water, sunscreen, sunglasses, a hat, rain gear, and first aid kit.

Visitors from lower altitudes are cautioned to avoid altitude sickness and dehydration by drinking plenty of water and stopping to rest often.

Bicycles ride at their own risk.

Do not leave valuables in your vehicle.

Wear appropriate clothing and shoes.

The high altitude Dale Ball and Connection Trails can be icy and cold in winter and early spring.

The lower altitude La Tierra Trails can be very hot during summer days.

## CITY OF SANTA FE RECREATION FACILITIES

### BICENTENNIAL POOL AND PARK

[www.santaferrecreation.com/bicentennial-pool](http://www.santaferrecreation.com/bicentennial-pool) | (505) 955-4778

1121 Alto Street

SUMMER ONLY

Swimming and Tot pools

The Bicentennial Park is adjacent to the pool and offers outdoor BBQ grills, basketball court, park shelter, playground, picnic tables, and tennis courts.

The park is near the Santa Fe River Trail that follows the river through the city.

Hours: Mon-Thu - 7:30am to 3:15pm; Fri - 7:30am to 12:15pm; Sat-Sun - 10am to 3:45pm

Fees per session: Child (0-10) \$1.50, Youth (11-17) \$2, Seniors \$2, Adults \$3

Check website for pool schedule

### FT. MARCY RECREATION COMPLEX

[www.santafenm.gov/ft\\_marcy\\_recreation\\_complex](http://www.santafenm.gov/ft_marcy_recreation_complex) | (505) 955-2500 or 2501

490 Bishops Lodge Road

Swimming and Tot pools

Community Room

Fitness Classes

Gymnasium

Locker Rooms

Pickleball and Racquetball Courts

Weight Room/Cardio-Vascular Fitness Equipment

Outdoor walking path, putting green, playground, and outdoor fitness equipment

Hours: Mon-Fri - 6am to 7pm - Pool closes at 4:30pm; Sat, Sun and Holidays closed.

Facility Fees: Child 0-10 yrs \$1.50, Youth 11-17 yrs \$3, Adult 18-59 yrs \$5, Seniors 60+ yrs \$3 Check website for class and pool schedules and fees

## GENOVEVA CHAVEZ COMMUNITY CENTER

[www.chavezcenter.com](http://www.chavezcenter.com) | (505) 955-4000

3221 Rodeo Road

Large complex with Aquatic program (Leisure pool, Lap Swimming and Therapy pool), Ice Arena (Ice Skating, Hockey League, Curling and Skate Rental), Fitness Center (Personal Training, Assessments, Massage & Social Dance), Gymnasium, Youth Programs, Parties and Rentals. Facility Fees: Child (0-10) \$2, Youth (11-17) \$4, Adult (18-59) \$7, Senior (60 plus) \$4

Hours: Mon-Fri 6am to 8pm

Sat 8:30am to 4pm; Sun closed

Check website for complete list of activities and schedules.

## MARTY SANCHEZ LINKS DE SANTA FE GOLF COURSE

[www.linksdesantafe.com](http://www.linksdesantafe.com) | (505) 955-4400 or 888-735-4657

205 Caja del Rio Road - Off Highway 599

18-hole course, 25-station all-grass driving range, practice greens, putting area and par 3 course located eight miles west of the historic downtown district. The championship 18-hole course and par 3 courses were both designed by Baxter Spann, a master landscape architect known for designing stunning golf courses that attract golfers of all skill levels.

## RESERVE A PARK

[www.santafenm.gov/how\\_to\\_reserve\\_a\\_park\\_1](http://www.santafenm.gov/how_to_reserve_a_park_1)

A permit is required to reserve a City park for family gatherings, parties, classes, group activities or other special events with 50 or more attendees. Groups of less than 50 are not required to obtain a permit; however, permit holders will have priority.

## SALVADOR PEREZ RECREATION CENTER

[www.santaferecreation.com/salvador-perez-recreation-complex](http://www.santaferecreation.com/salvador-perez-recreation-complex) | (505) 955-2607

601 Alta Vista Street

Swimming pool & lessons - Weight room with cardio-machines - Community -Room - Fitness Classes. The facility is located next to a historic Train Park featuring an outdoor walking path, and volleyball, playgrounds, tennis courts, and artificial turf football/soccer field, and baseball fields.

Hours: Mon-Fri 7am to 4pm; Pool: Mon-Fri 9am to 4pm



## MUNICIPAL RECREATION COMPLEX

[www.santafenm.gov/municipal\\_recreation\\_complex](http://www.santafenm.gov/municipal_recreation_complex)

## Caja del Rio Road

- 5 regulation adult soccer fields surrounded by a walking trail
- 1 large jungle gym on a sand-covered lot
- 6 softball fields (4 under lights)
- 2 Rugby fields and 2 Flag Football fields
- 1 BMX track - offers a youth BMX park that includes on-site bleachers and meets the requirements for hosting American Bicycle Association events.
- 1 Concession Stand

The complex supports a number of adult and youth baseball, Rugby, softball and soccer leagues. Check the website for detailed information.

## Recreation Park Rules and Regulations

- No motorized vehicles allowed on premises except in designated parking areas.
- No ATVs. No golf carts. No motorized scooters at BMX Track.
- All dogs must be on a leash. Dog owners must pick up & dispose of all dog waste.
- No alcohol.
- No firearms.
- No drugs.

## Recreation Division Requirement for Children in All Facilities

Children ages 10 or younger must be accompanied by an adult 18 years or older, in the immediate vicinity. The adult must supervise no more than three children.

Children ages 11-17 may be in the facility unaccompanied by may not be responsible for children under the age of 11.

In all pool facilities, children ages 7 and under must be accompanied by an adult in the water.

Children under 14 are not allowed in the weight rooms.



## COUNTY OF SANTA FE OPEN SPACE AND TRAILS

### ARROYO HONDO OPEN SPACE

The Arroyo Hondo Open Space consists of 87 acres north of the Arroyo Hondo, located approximately 7.5 miles south of downtown Santa Fe. Hiking trails from two trailheads provide access to panoramic view of the Galisteo Basin, Cerrillos Hills, Ortiz Mountains, and the Arroyo Hondo. The Arroyo Hondo Pueblo site and the historic dam can be seen from vista points. The property is open from dawn to dusk.

Trail map: [www.santafecountynm.gov/userfiles/Open\\_Space\\_andTrails/ArroyoHondoOpenSpaceMAP1-2014.pdf](http://www.santafecountynm.gov/userfiles/Open_Space_andTrails/ArroyoHondoOpenSpaceMAP1-2014.pdf)

Parking Directions: [www.santafecountynm.gov/userfiles/ArroyoHondoParkingDirections.pdf](http://www.santafecountynm.gov/userfiles/ArroyoHondoParkingDirections.pdf)

### BURRO LANE PARK

Burro Lane Park is located at the intersection of Burro Lane and Quail View Lane off of West Alameda near the Siler Bridge and roundabout in Santa Fe. Burro Lane Park was created to connect to the surrounding environment and provide a natural habitat for birds to forge, nest and live. The park's walking trail, observation points, and shelters create opportunities to view and enjoy the birds as well as wildflowers, grasses, shrubs, and trees. The site has been graded to maximize passive water harvesting allowing plants to receive surface runoff. The park has picnic facilities, a trail loop, and a parking area with a school bus turnaround.

### CERRILLOS HILLS STATE PARK

Cerrillos Hills State Park is located 15 miles south of Santa Fe on Highway 14 along the scenic Turquoise Trail in the Village of Cerrillos, New Mexico. The 1,098 acre parcel of land is owned by Santa Fe County and managed by New Mexico State Parks. Features include: hiking, mountain biking, and horseback riding on five miles of trails with breathtaking views of surrounding mountain ranges. The trailhead is equipped with restrooms, an informational kiosk, and horse trailer parking.

[www.cerrilloshills.org/visit-the-park](http://www.cerrilloshills.org/visit-the-park)

### EL CAMINO REAL PARK

The El Camino Real Park features a paved parking area for 20 cars at the trailhead, 0.9 miles of paved trail and two pedestrian bridges over the Santa Fe River. The project recreated meanders in the river channel, stabilized the river bed and banks, removed non-native vegetation and tons of trash and debris, and planted native cottonwood trees, willows, shrubs and grasses. Santa Fe County continues to work to restore the river using natural materials and native plants to stabilize the channel and enhance the riparian habitat.



### RIO EN MEDIO OPEN SPACE

The Rio En Medio Open Space is located just past the village of Rio En Medio along State Road 592, approximately 6 miles northeast of the village of Tesuque. The property consists of 121 acres along Rio En Medio. The trail follows the stream for about a mile through mixed woodlands to connect with a Forest Service trail and ultimately with Forest Service Road 412 and Pacheco Canyon. Please Note: Parking at the trailhead is limited.

### SAN YSIDRO RIVER PARK AND TRAIL

The trailhead and Parking for the River Trail is at the San Ysidro Crossing on the Santa Fe River. A trail connects the parking area to Agua Fria Park for 0.7 mile along the river. A River restoration project has been completed along this stretch of the river.

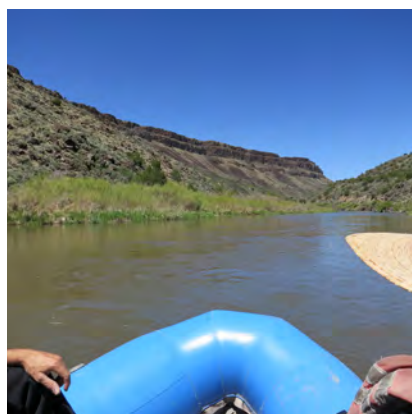
### SANTA FE RIVER GREENWAY

This project is a joint effort between Santa Fe County and the City of Santa Fe to construct approximately 15 miles of a continuous greenway comprised of parks and trails along the Santa Fe River. It runs from downtown Santa Fe to the Wastewater Treatment Plant west of NM599. The County's portion of the River Greenway is approximately 8 miles running from the City limits at Frenchy's Field to the Wastewater Treatment Facility. The County is restoring the River using natural materials and native plants to stabilize the channel and enhance the riparian habitat. It is also constructing a multi-use trail for recreational and alternative transportation use.

### SANTA FE RAILTRAIL

The Santa Fe Rail Trail follows the historic Atchison, Topeka and Santa Fe Railway line from the City of Santa Fe to Lamy. The trail starts in the Railyard Park and continues along the train tracks to Highway 285 and then to Lamy for a total of 18.1 miles. The Santa Fe Southern Railway train conducts scenic tours from the Santa Fe Railyard Park to Lamy and runs along the County's portion of the trail. The Rail Runner does not run along this portion of the trail. The portion under the management of Santa Fe County runs from the I-25 overpass near Rabbit Road south to Highway 285. The County's portion of the trail approximately 12.5 miles.

Trail map: [www.santafecountynm.gov/userfiles/Open\\_Space\\_andTrails/SantaFeRailTrailmap.pdf](http://www.santafecountynm.gov/userfiles/Open_Space_andTrails/SantaFeRailTrailmap.pdf)



## SANTA FE SPORTS LEAGUES & TENNIS CLUBS

### LA LIGA YOUTH SOCCER LEAGUE

Contact League President - Cesar Bernal at (505) 206-4653

### NORTHERN NEW MEXICO CHILDREN'S FOOTBALL LEAGUE

<https://nnmcf.ativesports.com/WELCOME> | (505) 316-6887

### NORTHERN NEW MEXICO FUSION VOLLEYBALL LEAGUE

[www.fusionvolleyball.org](http://www.fusionvolleyball.org) | [lafusionvolleyball@gmail.com](mailto:lafusionvolleyball@gmail.com)

### SANTA FE ADULT BASEBALL LEAGUE

(505) 316-1741 or (505) 470-4997

### SANTA FE ADULT SOCCER LEAGUE

[www.sfasl.org](http://www.sfasl.org) | (505) 231-3600

### SANTA FE ADULT SOFTBALL LEAGUE

Contact Director - David Padilla at (505) 470-2855

### SANTA FE AMERICAN YOUTH SOCCER ORGANIZATION (AYSO)

[www.sfayso.org](http://www.sfayso.org) | (505) 466-3542

League President: Alvin Valdez, contact him at [info@sfayso.org](mailto:info@sfayso.org) or [vindez@gmail.com](mailto:vindez@gmail.com)

Visit website to access Contact Form

### SANTA FE GIRLS SOFTBALL LEAGUE

<https://santafegirlssoftball.website.sportssignup.com> | Contact [santafegsl@yahoo.com](mailto:santafegsl@yahoo.com)

### SANTA FE FAT TIRE SOCIETY (MOUNTAIN BIKE CLUB)

[www.santafefattiresociety.org](http://www.santafefattiresociety.org)

### SANTA FE FUEGO )

[www.santafefuego.com/santafe.asp](http://www.santafefuego.com/santafe.asp) | (505) 204-2093

The Santa Fe Fuego are a Professional Baseball Team in the Pecos League of Professional Baseball Clubs.

### SANTA FE LITTLE LEAGUE

<https://tshq.bluesombrero.com/santafenmll> | (505) 603-1786

SANTA FE SENIORS ON BIKES

[www.santafesobs.com](http://www.santafesobs.com)

SANTA FE SKI TEAM

[www.santafeskiteam.com](http://www.santafeskiteam.com)

[info@santafeskiteam.org](mailto:info@santafeskiteam.org)

SANTA FE SOFTBALL ASSOCIATION

[www.santafesoftballassociation.com](http://www.santafesoftballassociation.com) | (505) 670-6641

SANTA FE YOUTH RUGBY LEAGUE

Contact League President - Greg Smith at (505) 690-2761

### Tennis Clubs

EL GANCHO FITNESS SWIM & RACQUET CLUB

[www.elgancho.com](http://www.elgancho.com) | (505) 988-5000

104 Old Las Vegas Highway

ROSEMARIE SHELLABERGER TENNIS CENTER

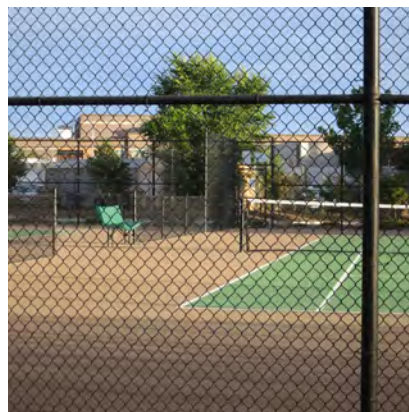
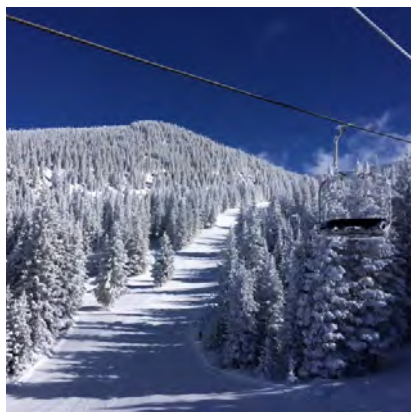
[www.shellabergertennis.com](http://www.shellabergertennis.com) | (505) 473-6144

1600-1/2 St. Michael's Drive

SANTA FE TENNIS & SWIM CLUB

[www.santafetennis.net](http://www.santafetennis.net) | (505) 988-4100

1755 Camino Corrales



## CITY OF SANTA FE COMMUNITY SERVICES

### LIBRARIES, FAMILY, SENIOR & YOUTH SERVICES

[www.santafenm.gov/community\\_services](http://www.santafenm.gov/community_services)

#### CONNECT

Connect is a network of navigators at clinics, city and county programs and community organizations that link people to services and resources in our community. Based on an Accountable Health Community model, Connect addresses the unmet, non-medical social needs of city and county residents by forging a stronger link between clinical care and community services. The program aims to improve community health, increase quality of care for individuals, and reduce health care costs to the system overall. To learn more about the CONNECT network and get assistance, visit: <https://www.santafenm.gov/connect>

#### COMMUNITY SERVICES

After School Program at Genoveva Chavez Community Center

[https://www.chavezcenter.com/after\\_school\\_programs](https://www.chavezcenter.com/after_school_programs)

Registration will be on a first come, first serve basis. Space is limited. Registration will begin in August 2022. Registration will take place at the Genoveva Chavez Community Center, Monday-Friday 8am to 5:30pm until the program is full. The cost of the program is \$50 per child per monthly session. Parents/guardians must pay in full before the first day of each session. The **After School Program is for children 6-12 years of age** (proof of age is required). Please provide one of the following documents during registration: birth certificate; immunization records; or a passport. **The Teen Center is for youth 13-17 years of age.** Activities include sports, swimming, ice skating, social games, fun with food projects, and arts&crafts. Special presentations and field trips may also be included. A snack is provided during the After School Program. On Fridays, children can bring snack money for the Cafe. (Children with severe food allergies must bring their own snack each day).

**Transportation** will be provided from the following schools: Gonzales; Carlos Gilbert; Chaparral; and Pinon. Transportation is limited at this time but other sites will be considered based on enrollment (minimum 5).

## Sick Child Policy

The program is committed to maintaining the good health of the children as much as possible. When children have any of the following conditions they may not attend or stay at City Youth Programs: temperature of 100 or higher; vomiting; diarrhea - 2 or 3 loose stools in a short time; cold symptoms; undiagnosed rash on the body; cloudy discharge from the eye(s); and any communicable disease. A doctor's note must be presented when a child is sent home with these symptoms. Children cannot return to the program until symptoms are no longer contagious and have been gone for 24 hours.

## DAY CAMPS

School closure day camps will be offered on designated days when the public schools are closed. Day Camps are for children 6-12 years of age (proof of age is required). Please provide one of the following documents during the registration: birth certificate, immunization records, or a passport. Program hours: 7:30am to 5:30pm. Parents/Guardians must send a full lunch and snack with each child for the day camps. Activities include sports, swimming, ice skating, social games, fun with food projects, and arts & crafts. Registration is on a first come, first serve basis. Space is limited. To access a Registration Packet and view Day Camps dates, visit: <https://www.chavezcenter.com/media/ASYP%20Registration%20Packet.pdf> The cost for each day camp is on a sliding scale fee structure (proof of income is required during registration). Please see sliding scale fee structure below:

### Day Camp Sliding Scale

Between \$50,001 and above	\$40 per day camp
Between \$36,001-\$50,000	\$30 per day camp
Between \$25,701-\$36,000	\$20 per day camp
Less than \$10,000-\$25,700	\$15 per day camp



**LIBRARY**

[www.santafelibrary.org](http://www.santafelibrary.org) | (505) 955-6780

The City of Santa Fe funds three libraries that are wheelchair accessible and have accessible parking:

**MAIN LIBRARY**

(505) 955-6781

145 Washington Avenue, 87501

Tuesday-Saturday 10am-6pm

**OLIVER LA FARGE BRANCH**

(505) 955-4862

1730 Llano Street, 87505

Tuesday, Wednesday, Thursday 12pm-5:30pm

**SOUTHSIDE BRANCH**

(505) 955-2820

6599 Jaguar Drive, 87507

Tuesday-Saturday 10am-6pm



## CITY SENIOR SERVICES

[www.santafenm.gov/division\\_of\\_senior\\_services](http://www.santafenm.gov/division_of_senior_services)

The Division of Senior Services offers a variety of programs to senior citizens at five senior centers throughout the City of Santa Fe.

### REGISTRATION

Anyone age 60 or over whom participates at any of our centers or utilizes the Division of Senior Services curriculum is asked to register with our program. They can secure program funding each time a registered senior prints his or her name on their various sign-in sheets e.g. meals, health screenings, fitness activities, transportation, in-home assistance, etc. Registration is held at the Mary Esther Gonzales Senior Center (MEG) located at 1121 Alto Street, Monday to Friday from 8:30 a.m. to 4:30 p.m. When you register, a staff member will fill out a form with you, including your date of birth, the last four digits (only) of your Social Security number, an emergency contact name and phone number along with a brief assessment.

### ELIGIBILITY FOR SENIOR SERVICES REGISTRATION

Participants must meet the following criteria, per the Older Americans Act:

Be sixty (60) years of age; or

Be the legal spouse of a member age 60 or over, residing at the same address; or

For meals only, be disabled and living at Luisa, Pasatiempo, or Villa Consuelo (senior housing).

For more information, call (505) 955-4711



## BENEFITS COUNSELING

The N.M. Aging and Long-Term Services Department offers free, unbiased information from trained volunteers to help seniors with questions on health insurance and other assistance programs. Covered benefits include managed care, Medicare, Medicaid, low cost housing, eyeglasses, hearing aids, residents' rights, Social Security, utility bill payment assistance, prescription drug coverage, low-cost health and dental care, and more. A Benefits Counselor volunteer is available by appointment to provide free assistance to seniors at the Mary Esther Gonzales Senior Center on Wednesday morning. To schedule an appointment call (505) 955-4721.

## IN-HOME SUPPORT SERVICES

### A) FAMILY CAREGIVER SUPPORT ASSISTANCE

Education, emotional support and guidance sessions are offered to caregivers dealing with the stress associated with providing specialized care. They also offer, on a limited basis, supplemental assistance and/or equipment such as wheelchairs, walkers, grab bars, shower/tub chairs, canes, etc. to qualifying participants.

### B) HOME MANAGEMENT

This program provides assistance with minor housekeeping and light chores (mopping, sweeping, dusting, washing dishes, laundry, ironing, etc.), light meal preparation, assisting with errands, grocery shopping, medical appointments, etc. for frail, homebound elderly.

### C) RESPITE CARE PROGRAM

This program provides relief to primary caregivers of individuals diagnosed with dementia-related disorders, thus enabling the caregiver a break from the stress and the special care needs required of those individuals. This service provides companionship, maintaining a clean and safe environment, minor meal preparation and memory exercises.

For more information or to schedule an assessment for in-home services, contact Theresa Trujillo at (505) 955-4745 or at [tptrujillo@santafenm.gov](mailto:tptrujillo@santafenm.gov)

## MEALS ON WHEELS (MOW)

Home delivered meals are available Monday through Friday for frail homebound elderly. The home delivered meals are the same as those served at the senior center meal sites, which provide 1/3 of the United States Dietary Reference Intakes (DRIs). For more information or to schedule an assessment for services, contact Carlos Sandoval at (505) 955-4748 or Tebrina Roibal at (505) 955-4749 or Yvette Sweeney at (505) 955-4739.

## NUTRITION/CONGREGATE MEALS

Congregate dining in a relaxed, welcoming environment is available Monday through Friday at five senior centers throughout the City of Santa Fe. The Division of Senior Services offers well-balanced, nutritious meals, which provide 1/3 of the United States Dietary Reference Intakes (DRIs).

**Breakfast** is served at the Luisa, Mary Esther Gonzales, Pasatiempo and Ventana de Vida Senior Centers from 7:30 to 8:30 a.m. for a suggested donation of \$1.00, for seniors 60 and over.

**Lunch** is served at all five centers, from 11:00 a.m. to 12:30 p.m. for a suggested donation of \$1.50, for all seniors 60 years and over.

**Meal tickets** are available for a suggested donation of \$12.50 for 10 meals, saving you \$2.50. If you are 59 or under, meals are a \$7.00 fee per meal.

For more information contact Yvette Sweeney at (505) 955-4739 or at [yasweeney@santafenm.gov](mailto:yasweeney@santafenm.gov)

## SENIOR CENTERS

Luisa Senior Center | (505) 955-4717 | 1500 Luisa Street

Mary Esther Gonzales Senior Center | (505) 955-4721 | 1121 Alto Street

Pasatiempo Senior Center | (505) 955-6433 | 664 Alta Vista Street

Ventana de Vida Senior Center | (505) 982-3200 | 1500 Pacheco Street

Villa Consuelo Senior Center | (505) 474-5431 | 1200 Camino Consuelo

## TRANSPORTATION SERVICES

Transportation services are available Monday through Friday from 8:30am to 4pm for registered seniors age 60 and over. Rides to medical appointments are given priority over all other rides. Transportation reservations must be made at least 24 hours in advance and before 4pm. There is a suggested donation of 50 cents per ride or a book of 25 rides is available for a suggested donation of \$10, saving you \$2.50.

To schedule a ride call (505) 955-4700.

#### HEALTH AND SAFETY PROMOTION

This program provides a wide range of health and wellness information and safety education and training. Included are monthly blood pressure, blood sugar and oxygen level tests; fall prevention workshops; nutrition classes; health, safety and emergency preparedness fairs; and at the Luisa, Mary Esther Gonzales (MEG) and Pasatiempo Senior Centers, fitness equipment for seniors to use. For more information contact Lugi Gonzales at (505) 955-4711 or [lgonzales@santafenm.gov](mailto:lgonzales@santafenm.gov).

#### COMPUTER INSTRUCTION PROGRAM

Senior Services members are welcome and encouraged to utilize one of the computer labs available in three of our senior centers: Luisa, Mary Esther Gonzales (MEG) and Pasatiempo. Currently, there is a general computer instruction class on Wednesdays from 10:00 a.m. to noon at MEG and a class specifically assisting with online job searches and applications; this is available on Fridays from 10:00 a.m. to noon at MEG..

#### GRANDPARENTS RAISING GRANDCHILDREN

This program is designed to assist grandparents (age 60 and over) who are raising or providing financial assistance to grandchildren. Yearly, modest vouchers are given to assist with out-of-pocket expenses for their grandchild(dren) such as medical, lunch meal tickets, respite services, school supplies, clothing, etc. For more information contact Theresa Trujillo at (505) 955-4745 or [tptrujillo@santafenm.gov](mailto:tptrujillo@santafenm.gov)

#### 50+ SENIOR OLYMPIC PROGRAM

This program provides men and women, age 50 and over, physical activities as well as an opportunity to share friendship with their peers citywide. Olympians participate within their own age category in athletic and recreational events. Event categories include air rifle, basketball, bowling, horseshoes, swimming, talent show, tennis, track and field. For more information about New Mexico Senior Games, visit: <https://nsga.com/new-mexico/> or contact Cristina Villa at (505) 955-4725 or [cavalla@santafenm.gov](mailto:cavalla@santafenm.gov)

#### SMART DRIVER COURSE

The AARP Smart Driver Course is a 4-hour course offered monthly at the Mary Esther Gonzales (MEG) Senior Center. Instructors review safety tips for seniors on the road including when to think about turning in your keys. Most New Mexico insurance companies offer a discount to individuals age 55 and over who take the class every three years. For more information about upcoming classes call (505) 955-4721 or look in the **Senior Scene** newsletter.



## VOLUNTEER PROGRAMS

### FOSTER GRANDPARENT PROGRAM (FGP)

FGP offers seniors age 55 and over opportunities to serve as mentors, tutors and caregivers for children and youth with special/exceptional needs. Foster Grandparents provide 20 hours of service weekly to community organizations such as schools and Head Starts, offering emotional support to children who have been abused and/or neglected, and assisting children with physical disabilities. Income-eligible Foster Grandparents receive modest tax-free stipends, reimbursement for transportation, meals during service, annual physical examinations, and free supplemental insurance while on duty. For more information contact Anya Alarid at (505) 955-4744 or Theresa Trujillo at (505) 955-4745.

### RETIRED SENIOR VOLUNTEER PROGRAM (RSVP)

RSVP provides seniors age 55 and over with a wide variety of engaging volunteer opportunities that aim to meet vital community needs. The program recruits, matches and supports volunteers through a free supplemental insurance program, provides access to conferences and trainings, hosts volunteer appreciation and social events, and distributes recognition and “thank you” gifts. Volunteer hours vary depending on the opportunity, which may include: food distributions/pantries, consumer/benefits counseling, mentoring/tutoring, hospital and hospice services, emergency preparedness, senior center activities, environment work, one-day events and more. Visit our website <https://sites.google.com/view/rsvp-Santa-Fe> for current volunteer opportunities, For more information contact Kristen Slater-Huff (505) 955-4760 or Marisa Romero at (505) 955-4743.

### SENIOR COMPANION PROGRAM (SCP)

SCP offers seniors age 55 and over opportunities to serve as companions and/or caregivers for lonely/isolated/frail homebound elderly and offer emotional support to seniors with disabilities, who are lonely or who have been neglected or abused. Income-eligible Senior Companions receive modest tax-free stipends, reimbursement for transportation, meals during service, annual physical examinations and free supplemental insurance while on duty. For more information contact Anya Alarid at (505) 955-4744 or Romella Glorioso-Moss at (505) 955-4745.

### SENIOR SCENE NEWSLETTER ONLINE

[www.santafenm.gov/senior\\_scene\\_newsletter](http://www.santafenm.gov/senior_scene_newsletter)

The Senior Scene Newsletter is a free, monthly publication that contains up-to-date and helpful information about all programs, activities and services for city seniors.

## COUNTY OF SANTA FE COMMUNITY SERVICES

[www.santafecountynm.gov/community\\_services](http://www.santafecountynm.gov/community_services)

### COMMUNITY CENTERS FOR RENT

Community Centers that are owned or leased to the County of Santa Fe are for the use of County residents and are to be used primarily for public purposes that benefit the community. Priority for using the Centers is given to public events and activities open and geared toward the community at large. Centers cannot be used for any business, profit making endeavors or political events.

Download Community Center Rental Application Form):

[www.santafecountynm.gov/media/files/Community%20Services/Community%20Centers/Santa%20Fe%20County%20Facility%20Use%20Application2021.pdf](http://www.santafecountynm.gov/media/files/Community%20Services/Community%20Centers/Santa%20Fe%20County%20Facility%20Use%20Application2021.pdf)

If you have questions please contact Estrella Martinez at (505) 995-9527 or at [efmartinez@santafecountynm.gov](mailto:efmartinez@santafecountynm.gov)

Applications can be mailed with payment to:

### **Santa Fe County Community Services Department**

Attn: Estrella Martinez

901 West Alameda, Suite D, Santa Fe, NM 87505

Phone: (505) 992-9876

### **Rio en Medio/Chupadero Community Center**

1 El Alto Road | Chupadero, NM 87506

Phone: (505) 988-3053

Attn: Gina Montoya at (505) 992-9876 or [gmontoya@santafecountynm.gov](mailto:gmontoya@santafecountynm.gov); or Anna War at (505) 992-9838 or [abransford@santafecounty.gov](mailto:abransford@santafecounty.gov)

### **The Nancy Rodriguez Community Center**

1 Prairie Dog Loop | Santa Fe, NM 87507

Phone: (505) 690-8843

Attn: Anna War at (505) 992-9838 or [abransford@santafecounty.gov](mailto:abransford@santafecounty.gov)

**La Cienega Community Center**

136 Camino San Jose (CR 50-A) | La Cienega, NM

Phone: (505) 992-9876

Attn: Gina Montoya at (505) 992-9876 or [gmontoya@santafecountynm.gov](mailto:gmontoya@santafecountynm.gov); or Anna War at (505) 992-9838 or [abransford@santafecounty.gov](mailto:abransford@santafecounty.gov)

**El Rancho Community Center**

394 County Road 84 | El Rancho, NM

Phone: (505) 455-2195

Attn: Danny Roybal at (505) 310-1581 or [danroybal@santafecountynm.gov](mailto:danroybal@santafecountynm.gov)

**Cundiya Community Center**

5 Jose Simon Drive | Cundiya, NM 87552

Phone: (505) 992-9876

Attn: Gina Montoya at (505) 992-9876 or [gmontoya@santafecountynm.gov](mailto:gmontoya@santafecountynm.gov); or Anna War at (505) 992-9838 or [abransford@santafecounty.gov](mailto:abransford@santafecounty.gov)

**Nambe Community Center**

180 A SR 503 | Nambe, NM

Phone: (505) 470-2035

Attn: Narcisco Quintana at [narciscoqu@gmail.com](mailto:narciscoqu@gmail.com)

**Max Coll Corridor Community Center**

16 Avenida Torreon | Santa Fe, NM 87508

Attn: Lisa Lincoln at [lisalincoln@gmail.com](mailto:lisalincoln@gmail.com)

**Bennie J. Chavez Community Center**

Attn: Anna War at (505) 992-9838 or [abransford@santafecounty.gov](mailto:abransford@santafecounty.gov)



## SENIOR CENTERS

### ACTIVITY INFORMATION

The Senior Program provides many opportunities for creativity, learning and socialization and offers many health and wellness classes. Stop by and enjoy yoga, core exercise, strength training, Tai Chi, billiards, ceramics, weaving, jewelry making, art classes, tinwork, pinochle, creative writing, museum visits, and much more.

Contact our Activities Coordinators for more information:

Jonathan Pacheco - Chimayo Senior Center - (505) 351-4686

Josie Atilano - Santa Cruz Senior Center - (505) 753-8598

Ida Lucero - Edgewood Senior Center - (505) 281-2515

Lula Wilson - El Rancho Senior Center - (505) 455-2195

Esperanza Salazar - Eldorado Senior Center - (505) 466-1039

### MEAL SERVICE

#### Congregate Meals (Lunch Service)

Individuals are welcome to join us in any of our Senior Centers for lunch. Lunch is served daily between 11:30 and 1:00. There is a suggested donation of \$1.50 for individuals age 60+. Guests are also welcome to join us - guest lunches are \$7.50.

#### MEALS ON WHEELS

Santa Fe County is proud to deliver meals to qualified homebound seniors.

Seniors interested in receiving home delivered meals should call (505) 992-3069

### TRANSPORTATION

Santa Fe County provides a reliable and affordable mode of transportation. Our reliable drivers provide transportation to medical appointments, grocery shopping, volunteer, and miscellaneous errands. For additional information or to schedule transportation please call at (505) 992-3069.

## SENIOR CENTERS

**Edgewood Senior Center**[\(505\) 281-2515](tel:5052812515)

114 Quail Trail | Edgewood, NM 87015

**EL Rancho Senior Center**[\(505\) 455-2195](tel:5054552195)

394 County Road 84 | Santa Fe, NM 87506

**Abedon Lopez Senior Center** (Santa Cruz)[\(505\) 753-8598](tel:5057538598)

155A Camino De Quintana | Santa Fe, NM 87567



## EDUCATION IN SANTA FE

INSTITUTE OF AMERICAN INDIAN ARTS

[www.iaia.edu](http://www.iaia.edu) | (505) 424-2300

83 Avan Nu Po Road | Santa Fe, NM 87508

Located on a stunning 140-acre campus, the Institute of American Indian Arts (IAIA) is the only four-year degree fine arts institution in the nation devoted to contemporary Native American and Alaska Native arts. It is devoted to the study of contemporary arts, as well as the art of education. IAIA also operates the Center for Lifelong Education Conference Center and the Museum of Contemporary Native Arts. IAIA welcomes students from the 567 federally-recognized tribes and non-Native Americans looking to obtain a world-class arts education.

Degrees Awarded:

IAIA offers undergraduate degrees in Studio Arts, Cinematic Arts, Creative Writing, Museum Studies, Indigenous Studies, Performing Arts, and graduate degrees in Creative Writing and Studio Arts.

ST. JOHN'S COLLEGE

[www.sjc.edu/about/campus-information/campus-information](http://www.sjc.edu/about/campus-information/campus-information) | (505) 984-6000

1160 Camino de Cruz Blanca | Santa Fe, NM 87505

St. John's is a coeducational, liberal arts college. The college was founded in Annapolis, Maryland in 1696 as King William's School and chartered in 1784 as St. John's College. In 1937 it adopted a unified curriculum based on the study of great works in the humanities and sciences and premised on the belief that inquiry and discussion are at the heart of learning. A second campus dedicated to the same educational vision was opened in 1964 in Santa Fe, New Mexico. In 1967 the Santa Fe campus added the college's first graduate program.

Degrees Awarded:

Undergraduate: B.A. (Bachelor of Arts) degree.

Graduate: M.A. degree — Master of Arts in Liberal Arts (both campuses), Master of Arts in Eastern Classics (Santa Fe campus only), and Liberal Arts Education Certificate.

## SANTA FE COMMUNITY COLLEGE

[www.sfcc.edu](http://www.sfcc.edu) | (505) 428-1000

6401 Richards Avenue | Santa Fe, NM 87508

For more than 35 years, Santa Fe Community College has been the gateway to success for individuals and the community. The College provides affordable, high-quality educational programs that serve the social, cultural, technological and economic needs of Santa Fe's diverse community. More than 13,000 students are served each year in its credit, noncredit and adult programs. SFCC is designated a "Best for Vets" and a "2015 Military Friendly" School.

## Degrees and Certificates Awarded:

Santa Fe Community College offers more than 100 degree and certificate programs through the schools of Arts, Design and Media Arts; Business, Professional Studies and Education; Fitness Education; Sciences, Health, Engineering and Math; Liberal Arts; and Trades, Advanced Technology, and Sustainability.

View complete list of Degrees and Certificates awarded:

<https://www.sfcc.edu/degrees-and-certificates/>

## SANTA FE HIGHER EDUCATION CENTER

[HTTPS://WWW.SFCC.EDU/HIGHER-EDUCATION-CENTER/](https://www.sfcc.edu/higher-education-center/) | (505) 428-1725

1950 Siringo Road | Santa Fe, NM 87505

The Santa Fe Higher Education Center (SFHEC) is a partnership among three universities and Santa Fe Community College. The partner universities are New Mexico Highlands University (NMHU), Northern New Mexico College (NNMC) and University of New Mexico (UNM). The SFHEC is proud to offer degree programs through the partners in the Santa Fe Higher Education Center. Each partner institution will admit students according to its own admission and registration policies.

## Degrees Awarded:

The partner universities at the SFHEC offer courses leading to baccalaureate and graduate degrees including business administration, criminal justice, education, computer sciences, engineering, fine arts, psychology and human services.

# SANTA FE PUBLIC SCHOOLS

[www.sfps.info](http://www.sfps.info) | District Office: (505) 467-2000

610 Alta Vista Street | Santa Fe, NM 87505

Acequia Madre Elementary (K-6)	(505) 467-4000
Amy Biehl Community School (PK-8)	(505) 467-2100
Aspen Community School (PK-8)	(505) 467-4500
Atalaya Elementary School (PK-6)	(505) 467-4400
Capital High School (9-12)	(505) 467-1000
Carlos Gilbert Elementary School (PK-6)	(505) 467-4700
César Chávez Elementary School (PK-6)	(505) 467-3200
Chaparral Elementary School (PK-6)	(505) 467-1400
Desert Sage Academy	(505) 467-0310
Early College Opportunities (9-12)	(505) 467-2701
E.J. Martinez Elementary School (PK-6)	(505) 467-3800
El Camino Real Academy (PK-8)	(505) 467-1300
El Dorado Community School (K-8)	(505) 467-4900
Gonzales Community School (K-8)	(505) 467-3100
Kearny Elementary School K-6)	(505) 467-1800
Mandela International Magnet School (6-8)	(505) 467-1901
Milagro Middle School (6-8)	(505) 467-3300
Nava Elementary School (PK-6)	(505) 467-1200
Nina Otero Community School (PK-8)	(505) 467-4200
Nye Early Childhood Center (PK)	(505) 467-4600
Ortiz Middle School (6-8)	(505) 467-2300
Piñon Elementary School (PK-6)	(505) 467-1600
Ramirez Thomas Elementary School (PK-6)	(505) 467-3000



Salazar Elementary School (K-6)	(505) 467-3900
Santa Fe High School (9-12)	(505) 467-2400
Sweeney Elementary School (PK-6)	(505) 467-1500
Tesuque Elementary School (PK-6)	(505) 467-4100
Wood Gormley Elementary School (K-6)	(505) 467-4800

### **SANTA FE LOCATED STATE CHARTER SCHOOLS**

THE MASTERS PROGRAM – GRADES 9-12

[www.tmpsantafe.org](http://www.tmpsantafe.org) | (505) 428-7320

6401 Richards Avenue | Santa Fe, NM 87508

On the campus of Santa Fe Community College

MONTE DEL SOL CHARTER SCHOOL – GRADES 7-12

[www.mdscs.org](http://www.mdscs.org) | (505) 982-5225

4157 Walking Rain Road | Santa Fe, NM 87507

NEW MEXICO SCHOOLS FOR THE ARTS – GRADES 9-12

[www.nmschoolforthearts.org](http://www.nmschoolforthearts.org) | (505) 310-4194

500 Montezuma Avenue | Santa Fe, NM 87501

TIERRA ENCANTADA CHARTER SCHOOL – GRADES 7-12

[www.tecsalvord.org](http://www.tecsalvord.org) | (505) 983-3337

4601 Mission Bend | Santa Fe, NM 87507

TURQUOISE TRAIL CHARTER ELEMENTARY – GRADES PK-5

[www.turquoisetrailcharterschool.org](http://www.turquoisetrailcharterschool.org) | (505) 986-4000

13A San Marcos Loop | Santa Fe, NM 87508

TURQUOISE TRAIL MIDDLE SCHOOL – GRADES 6-8

[www.turquoisetrailcharterschool.org](http://www.turquoisetrailcharterschool.org) | (505) 986-4000

13A San Marcos Loop | Santa Fe, NM 87508

**SANTA FE PRIVATE SCHOOLS**

There are approximately 27 private schools in the Santa Fe area. Please find listed those enrolling more than 100 students.

MISSION VIEJO CHRISTIAN ACADEMY – GRADES PK-8

[\(505\) 474-8080](tel:(505)474-8080)

4601 Mission Bend | Santa Fe, NM 87507

RIO GRANDE SCHOOL – GRADES PK-6

[www.riograndeschool.org](http://www.riograndeschool.org) | [\(505\) 983-1621](tel:(505)983-1621)

715 Camino Cabra | Santa Fe, NM 87505

SANTA FE PREP SCHOOL – GRADES 7-12

[www.sfprep.org](http://www.sfprep.org) | [\(505\) 982-1829](tel:(505)982-1829)

1101 Camino de la Cruz Blanca | Santa Fe, NM 87505

SANTA FE SCHOOL FOR THE ARTS & SCIENCES – GRADES PK-8

[www.santafeschool.org](http://www.santafeschool.org) | [\(505\) 438-8585](tel:(505)438-8585)

5912 Jaguar Drive | Santa Fe, NM 87507

SANTA FE WALDORF SCHOOL – GRADES PK-12

[www.santafewaldorf.org](http://www.santafewaldorf.org) | [\(505\) 983-9727](tel:(505)983-9727)

26 Puesta Del Sol | Santa Fe, NM 87508

SANTO NINOS REGIONAL CATHOLIC SCHOOL – GRADES PK-6

[www.santoninoregional.org](http://www.santoninoregional.org) | [\(505\) 424-1766](tel:(505)424-1766)

23 College Avenue | Santa Fe, NM 87508

ST. MICHAEL'S HIGH SCHOOL – GRADES 7-12

[www.stmichaelssf.org](http://www.stmichaelssf.org) | [\(505\) 983-7353](tel:(505)983-7353)

100 Siringo Road | Santa Fe, NM 87505



## OTHER AREA SCHOOLS

NEW MEXICO CONNECTIONS ACADEMY – GRADES K-12 (ONLINE SCHOOL)

[www.connectionsacademy.com](http://www.connectionsacademy.com) | 1-855-399-8498

10960 Grantchester Way | Columbia, MD 21044

NEW MEXICO SCHOOL FOR THE DEAF – BIRTH THROUGH 21 YEARS OLD

[www.nmsd.k12.nm.us](http://www.nmsd.k12.nm.us) | (505) 476-6300

1060 Cerrillos Road | Santa Fe, NM 87505

SANTA FE INDIAN SCHOOL – GRADES 7-12

[www.sfis.k12.nm.us](http://www.sfis.k12.nm.us) | (505) 989-6330

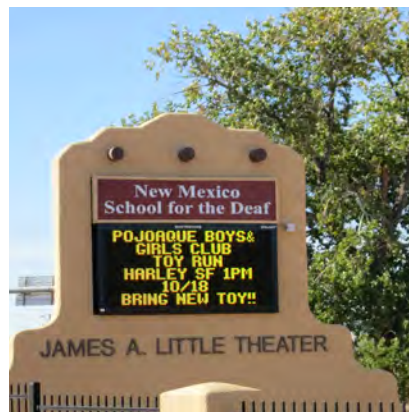
1501 Cerrillos Road | Santa Fe, NM 87502

SOUTHWESTERN COLLEGE AND NEW EARTH INSTITUTE

[www.swc.edu](http://www.swc.edu) | (505) 471-5756

3960 San Felipe Road | Santa Fe, NM 87507

Southwestern College is a consciousness-centered graduate school in Santa Fe, New Mexico offering Master's Degrees in Counseling, Art Therapy/Counseling, and Art Therapy for clinical professionals leading to licensure and specialty certificates for ongoing professional development.



## HEALTH CARE IN SANTA FE

### ASPEN MEDICAL CENTER

[www.aspenmedicalcenter.com](http://www.aspenmedicalcenter.com) | (505) 466-5885

3450 Zafarano Drive, Suite C | Santa Fe, NM 87507

Aspen Medical Center is an outpatient medical facility combining primary care and urgent care services for patients of all ages:

- Traditional primary care appointments for wellness care and chronic disease management

- Urgent care services for all ages 7 days a week, including evenings and weekends

- Urgent care appointments available and walk-ins welcome

- On-site X-ray and laboratory services

- Sports physicals (no appointment needed)

- Most major insurances accepted and cash visits accommodated

### CHRISTUS ST. VINCENT HEALTH SYSTEM

[www.stvin.org](http://www.stvin.org) | Main Hospital: (505) 983-3361

455 St. Michael's Drive | Santa Fe, NM 87505

Founded in 1865, Christus St. Vincent was the first organized health care facility in the New Mexico Territory. The 200-bed hospital operates under a 50/50 partnership with CHRISTUS Health and local community health impact organization, Anchorum St. Vincent. The hospital and outpatient clinics serve more than 300,000 people in seven counties in northern New Mexico. It employs more than 2,400 physicians and associates. Christus St. Vincent Health System is a member of the Mayo Clinic Care Network, a select group of independent health systems that work with the Mayo Clinic to improve the delivery of health care and better service their patients and communities. Services provided by Christus St. Vincent Health System include:

- AntiCoagulation Services

- Behavioral Health Services

- Birth Services

- Brain & Spine Care

- Breast Care

- Cancer Center

Cardiac Rehab  
Dermatology  
Digestive Care  
Ear, Nose & Throat  
Emergency  
Family Practice  
Health & Fitness Center  
Heart Care  
Holistic Health & Palliative Care  
Hospitalist  
Imaging & Radiology  
Integrative Medicine  
Laboratory Services  
Memory Care (Geriatrics)  
Neurology  
Orthopaedics  
Outpatient Surgery Center  
Pain & Spine  
Pediatrics  
Pharmacy  
Physical Therapy/Rehabilitation  
Plastic Surgery  
Pulmonary & Critical Care  
Pulmonary Rehab  
Sleep Services  
Sports Medicine  
Stroke Care  
Surgical Services  
Trauma  
Urgent Care  
Urology  
Women's Care  
Wound Care



**PRIMARY CARE**

ADULT AND FAMILY CARE - ACCEPTING VIRTUAL VISITS

[\(505\) 913-3627](tel:(505)913-3627)

465 St. Michael's Drive, Suite 230 | Santa Fe, NM 87505

Offering Family Medicine for newborns, children, adults and seniors

ARROYO CHAMISO PEDIATRICS - ACCEPTING VIRTUAL VISITS

[\(505\) 913-3627](tel:(505)913-3627)

465 St. Michael's Drive, Suite 200 | Santa Fe, NM 87505

Offering Pediatric Care for newborns through 18 years of age

ENTRADA CONTENTA HEALTH CENTER - ACCEPTING VIRTUAL VISITS

[\(505\) 913-3627](tel:(505)913-3627)

5501 Herrera Drive | Santa Fe, NM 87507

Offering Pediatrics, Family Medicine, and Urgent Care

FAMILY MEDICINE CENTER - ACCEPTING VIRTUAL VISITS

[\(505\) 913-3627](tel:(505)913-3627)

2025 Galisteo Street | Santa Fe, NM 87505

Offering Family Medicine for newborns, children, adults and seniors

POJOAQUE PRIMARY CARE - ACCEPTING VIRTUAL VISITS

[\(505\) 913-3627](tel:(505)913-3627)

5 Petroglyph Circle, Suite A | Pojoaque, NM 87506

Offering Family Medicine for newborns, children, adults and seniors

**SPECIALTY SERVICES**

ANTICOAGULATION SERVICES

[\(505\) 913-5287](tel:(505)913-5287)

465 St. Michael's Drive, Suite 114 | Santa Fe, NM 87505

BEHAVIORAL HEALTH SPECIALISTS

[\(505\) 913-3056](tel:(505)913-3056)

440 St. Michael's Drive, Suite 250 | Santa Fe, NM 87505

CARDIOPULMONARY REHAB CENTER

[\(505\) 913-5549](tel:(505)913-5549)

455 St. Michael's Drive | Santa Fe, NM 87505

CARE COORDINATION

[\(505\) 913-4256](tel:(505)913-4256)

465 St. Michael's Drive, Suite 210 | Santa Fe, NM 87505



## DERMATOLOGY SPECIALISTS

[\(505\) 913-3380](tel:(505)913-3380)

1622 Galisteo Street, Suite 100 | Santa Fe, NM 87505

## EAR, NOSE &amp; THROAT SPECIALISTS

[\(505\) 982-4848](tel:(505)982-4848)

1631 Hospital Drive, Suite 200 | Santa Fe, NM 87505

## HAND SURGERY &amp; BONE HEALTH

[\(505\) 913-4263](tel:(505)913-4263)

1631 Hospital Drive, Suite 220 | Santa Fe, NM 87505

## HEART &amp; VASCULAR CENTER

[\(505\) 984-8012](tel:(505)984-8012)

1631 Hospital Drive, Suite 110 | Santa Fe, NM 87505

## HOLISTIC HEALTH &amp; WELLNESS

[\(505\) 913-3820](tel:(505)913-3820)

490 B West Zia Road, Suite 4 | Santa Fe, NM 87505

## MEDICAL SPECIALTY CLINIC

433 St. Michael's Drive | Santa Fe, NM 87505

## NEUROLOGY SPECIALISTS

[\(505\) 913-4780](tel:(505)913-4780)

465 St. Michael's Drive, Suite 116 | Santa Fe, NM 87505

## NEUROSURGICAL ASSOCIATES

[\(505\) 988-3233](tel:(505)988-3233)

465 St. Michael's Drive, Suite 107 | Santa Fe, NM 87505

## ORTHOPAEDIC SPECIALTY CLINIC

[\(505\) 982-5014](tel:(505)982-5014)

2968 West Rodeo Park Drive, Suite 150 | Santa Fe, NM 87505



## PAIN &amp; SPINE SPECIALISTS

[\(505\) 982-7246](tel:5059827246)

1631 Hospital Drive, Suite 100 | Santa Fe, NM 87505

## ORTHOPAEDICS &amp; SPORTS INSTITUTE (SURGERY CENTER)

[\(505\) 913-4400](tel:5059134400)

2990 Rodeo Park East Drive | Santa Fe, NM 87505

## PLASTICS SURGERY SPECIALISTS

[\(505\) 913-4360](tel:5059134360)

1631 Hospital Drive, Suite 150 | Santa Fe, NM 87505

## PRE-ANESTHESIA SURGICAL SCREENING CLINIC (PASS)

[\(505\) 982-3626](tel:5059823626)

1631 Hospital Drive, Suite 112 | Santa Fe, NM 87505

## PULMONARY &amp; CRITICAL CARE ASSOCIATES

[\(505\) 984-2600](tel:5059842600)

465 St. Michael's Drive, Suite 117 | Santa Fe, NM 87505

## REGIONAL CANCER CENTER

[\(505\) 913-8900](tel:5059138900)

490 A West Zia Road | Santa Fe, NM 87505

## REGIONAL LABORATORY

[\(505\) 913-3110](tel:5059133110)

1631 Hospital Drive, Suite 130 | Santa Fe, NM 87505

## REGIONAL SLEEP CENTER

[\(505\) 913-5363](tel:5059135363)

440 St. Michael's Drive, Suite 150 | Santa Fe, NM 87505

## REGIONAL WOUND &amp; HYPERBARIC CENTER

[\(505\) 913-3180](tel:5059133180)

465 St. Michael's Drive, Suite 101 | Santa Fe, NM 87505

## SPORTS MEDICINE &amp; THERAPY SERVICES

[\(505\) 913-5100](tel:5059135100)

2968 West Rodeo Park Drive, Suite 100 | Santa Fe, NM 87505

**SURGICAL ASSOCIATES**[\(505\) 913-3975](tel:(505)913-3975)

1631 Hospital Drive, Suite 240 | Santa Fe, NM 87505

**UROLOGY ASSOCIATES**[\(505\) 982-3534](tel:(505)982-3534)

465 St. Michael's Drive, Suite 110 | Santa Fe, NM 87505

**WOMEN'S CARE SPECIALISTS**[\(505\) 984-0303](tel:(505)984-0303)

1622 Galisteo Street, Suite 200 | Santa Fe, NM 87505

**CONCENTRA**[www.concentra.com](http://www.concentra.com) | [\(505\) 438-9402](tel:(505)438-9402)

720 Saint Michaels Drive, Suite C | Santa Fe, NM 87505

Hours: 8am to 5pm, M-F

Physical Therapy | Hours: 8am to 5pm, M-F

Concentra, a division of Select Medical, is a national health care company that provides occupational medicine, urgent care, physical therapy, and wellness services from more than 500 medical centers and 130 onsite clinics nationwide.

**LA FAMILIA MEDICAL CENTER**[www.lafamiliasf.org](http://www.lafamiliasf.org) | [\(505\) 982-4425](tel:(505)982-4425)

La Familia Medical Center Services:

Medical Services

Oral Health

Behavioral Health

Healthcare for the Homeless

Health Education

Residency Training

La Familia provides services to all individuals and families, regardless of income or ability to pay. Services are offered on a sliding fee scale, according to family size and income. La Familia accepts Medicare, Medicaid, all insurances, HMOs & workers' compensation.

## ALTO STREET CLINIC

(505) 982-4425

1035 Alto Street | Santa Fe, NM 87501

Hours: 7:45-5:15 M-F (Closed 12pm-1pm)

Closed the 1st Wednesday of each month until 12:30 pm

## SOUTHSIDE CLINIC

(505) 438-3195

2145 Caja Del Oro Grant Road | Santa Fe, NM 87507

Hours: 7:45-5:15 M-F (Closed 12pm-1pm)

Closed the 1st Wednesday of each month until 12:30 pm

## DENTAL CLINIC

(505) 984-5048

6401 Richards Avenue | Santa Fe, NM 87508

Hours: 7:30-6:00 M-F

Closed the 1st Wednesday of each month until 12:30 pm

## HEALTH CARE FOR THE HOMELESS

(505) 988-1742

1532 Cerrillos Road - Hours: 8:00-5:00 M-F (Closed 12pm-1pm)

Outreach Center Pete's Place - Hours: 8:00-11:30 Tues, Wed, Fri

**PRESBYTERIAN SANTA FE MEDICAL CENTER**<https://santa-fe-medical-center.phs.org/Pages/default.aspx> | (505) 772-1234

4801 Beckner Road | Santa Fe, NM 87507

**Clinics at Physician Office Building**, Hours Mon-Fri 8am-5pm | (505) 772-2000 **Urgent Care**, Hours Mon-Fri 8am-7pm | (505) 303-5000

Presbyterian has served the communities of northern New Mexico for more than 60 years. Their new medical center provides a range of services focused on improving quality, enhancing the patient experience and lowering the total cost of care. Presbyterian Santa Fe Medical Center offers more choice and greater access to health care for Santa Fe.

## COLON AND RECTAL SURGERY

Colon and rectal surgery, often called colorectal surgery, is a specialty providing care for problems related to the lower intestinal tract, including the colon and rectum. Surgeons who practice this specialty have general surgery training with a specific focus on treating disorders and diseases of the lower intestinal tract. They can care for problems such as colon or rectal polyps, hemorrhoids, and inflammatory bowel disease..

## CARDIOLOGY

The cardiology specialty is concerned with disorders of the heart. Services include the medical diagnosis and treatment of congenital heart defects, heart failure, coronary disease, valvular heart disease, electrophysiology, and more.

## CONGENITAL CARDIOLOGY

Congenital cardiology focuses on fetal cardiology, adult congenital cardiology, electrophysiology, congenital heart disease, and acquired heart diseases in both pediatric and adult patients.

## EMERGENCY DEPARTMENT

In the emergency department, providers diagnose and treat illnesses and injuries that can be life-threatening and require immediate medical attention.

## FAMILY MEDICINE

Family medicine is a primary care specialty focused on the physical, mental, and social health and well-being of patients of all ages. The family medicine specialty can also focus on infants, children, adolescents, and young adults, including well-child checks and more specialized care.

## FAMILY MEDICINE SKIN CARE

Family medicine skin care is a specialty that focuses on the treatment of basic skin, hair, and nail problems within a primary care setting. There are many conditions that can be diagnosed and treated by a primary care provider, including acne, dermatitis (or inflammation of the skin), fungal infections, shingles, and warts or other growths. More serious skin conditions may need to be referred to a dermatologist.

## GENERAL SURGERY

General surgery is a specialty dedicated to providing expert treatment through surgical procedures.

## INFUSION SERVICES

Infusions provide ongoing outpatient treatment for people with rheumatoid arthritis, multiple sclerosis, and immune system problems.

## LABORATORY

Services include medical testing to help prevent, diagnose, and manage health-related problems and diseases

## ORTHOPEDICS

Orthopedics is a specialty dedicated to injuries and diseases related to the musculoskeletal system, including bones, joints, tendons, ligaments and muscles. Sports injuries, joint replacements, degenerative diseases, congenital disorders, tumors and infections are also included in this specialty.

**ORTHOPEDIC SURGERY**

Bringing orthopedic medicine and surgical care through advanced technology, the team treats both acute and chronic conditions of the bone, joints, and muscles. They also provide orthopedic surgical options, including hip, knee, and shoulder replacements.

**PEDIATRICS**

Pediatrics is a primary care specialty focused on the physical, mental and social health and well-being of infants, children, adolescents, and young adults.

**PULMONOLOGY**

The pulmonology specialty is concerned with acute and chronic diseases affecting the lungs and respiratory tract including breathing disorders, chronic cough, severe allergies, asthma, sleep disorders, tuberculosis, lung abscesses, certain types of cancer and lung diseases such as cystic fibrosis.

**RADIOLOGY**

Services include diagnostic and interventional radiology, ultrasound imaging, vascular ultrasound imaging, PET/CT scans, digital mammography, computerized tomography (CAT Scans), bone density testing, nuclear medicine, echocardiography, and magnetic resonance imaging (MRI).

**REHABILITATION SERVICES**

Services include therapy and support options for patients recovering from strokes, neurological and orthopedic conditions. Therapy services are offered on both an inpatient and outpatient basis and include physical, occupational, speech and cardiac/pulmonary rehabilitation.

**UROLOGY**

Urology is a specialty focused on diseases of the male and female urinary tract and the male reproductive organs. Urologists possess expertise in internal medicine, pediatrics, and gynecology due to the wide variety of clinical problems encountered in this specialty.

**WOMEN'S HEALTH/OBSTETRICS AND GYNECOLOGY**

Services include prevention and screenings, pregnancy care, support during and after birth, along with surgical and nonsurgical treatments of the female reproductive system. Providers include board certified doctors, certified nurse midwives, certified nurse practitioners and physician assistants.

**RAILYARD URGENT CARE**

[www.railyardurgentcare.com](http://www.railyardurgentcare.com) | (505) 501-7791

831 South St. Francis Drive | Santa Fe, NM 87501

Hours: 8:00am-7:00pm, 7 days a week

Railyard Urgent Care is a dedicated urgent care facility addressing non-life-threatening illnesses and injuries without an appointment. Railyard Urgent Care provides urgent care

services for both adults and children, wellness and preventative medicine, seasonal care, occupational health, and flu shots and vaccinations.

### **SOUTHWEST CARE CENTER**

[www.southwestcare.org](http://www.southwestcare.org)

Southwest Care was founded in 1996 with a primary focus on serving those living with HIV/AIDS and has built an international reputation for outstanding research and compassionate treatment in this field. Since then, they have expanded the scope of their services to meet the broader health care needs of the Santa Fe and Albuquerque communities. Services include: Primary Care; Pediatrics; Women's Health; Gender Equity Medicine; Behavioral Health; Geriatrics; HIV/Hepatitis C; Pharmacy; Diabetes; Annual Wellness Visits; Sports Physicals; Immunizations; Travel Medicine; Case Management; HPV Vaccination; and Telehealth..

#### **SOUTHWEST CARE - GALISTEO**

[\(505\) 955-9454](tel:5059559454)

1691 Galisteo Street, Suite D | Santa Fe, NM 87505

Adult Primary Care, Gender Equity Medicine

#### **SOUTHWEST CARE - ALAMEDA**

[\(505\) 954-9454](tel:5059549454) | Pharmacy: [\(505\) 216-0340](tel:5052160340)

901 West Alameda | Santa Fe, NM 87501

Women's Health, Diabetes, Gender Equity Medicine, Pediatrics, Adult Primary Care, Pharmacy

#### **SOUTHWEST CARE - HARKLE**

[\(505\) 955-9454](tel:5059559454) | Pharmacy: [\(505\) 989-8154](tel:5059898154)

649 Harkle Road, Suite E | Santa Fe, NM 87505

Adult Primary Care, Geriatrics, Gender Equity Medicine, HIV & Hepatitis C, Clinical Research, Pharmacy

### **ULTIMED™ SANTA FE**

[www.ultimed.com](http://www.ultimed.com) | [\(505\) 989-8707](tel:5059898707)

707 Paseo de Peralta | Santa Fe, NM 87501

Hours: 9:00am-5:00pm, 7 days a week

Offers emergency services and telemedicine visits.





## MUSEUMS & ATTRACTIONS

### CENTER FOR CONTEMPORARY ARTS

[www.ccasantafe.org](http://www.ccasantafe.org)

The Center for Contemporary Arts (CCA) is a vibrant artspace and cinematheque offering exhibitions, films, and performances for northern New Mexico's diverse communities. Founded in 1979, CCA is one of the oldest artist-centered organizations in the American Southwest, committed to supporting emerging and established artists.

### EL MUSEO CULTURAL

[www.elmuseocultural.org](http://www.elmuseocultural.org)

El Museo Cultural is a non-profit organization dedicated to preserving, protecting, and promoting the Hispano art, culture and traditions of Northern New Mexico is organized as a Center of Hispanic Culture and Learning.

### EL RANCHO DE LAS GOLONDRINAS

[www.golondrinas.org](http://www.golondrinas.org)

El Rancho de las Golondrinas is a living history museum located on 200 acres in a rural farming valley just south of Santa Fe, New Mexico. The museum, dedicated to the history, heritage and culture of 18th and 19th century New Mexico, opened in 1972.

### GEORGIA O'KEEFFE MUSEUM

[www.okeeffemuseum.org](http://www.okeeffemuseum.org)

The Georgia O'Keeffe Museum, in Santa Fe, New Mexico, opened to the public in July 1997, eleven years after the death of the artist from whom it takes its name. It is the only museum in the United States dedicated to an internationally-known woman artist.

### MEOW WOLF

[meowwolf.com](http://meowwolf.com)

Meow Wolf is an arts production company that creates immersive, multimedia experiences that transport audiences of all ages into fantastic realms of storytelling. Their work is a combination of jungle gym, haunted house, children's museum, and immersive art exhibit. This unique fusion of art and entertainment gives audiences fictional worlds to explore.

### MUSEUM OF CONTEMPORARY NATIVE ARTS

[www.iaia.edu/museum](http://www.iaia.edu/museum)

The Museum of Contemporary Native Arts (MoCNA), a center of the Institute of American Indian Arts (IAIA), is dedicated to increasing public understanding and appreciation of/for contemporary Native art, history and culture through presentation, collection/acquisition, preservation, and interpretation.

## MUSEUM OF INDIAN ARTS AND CULTURE

[www.indianartsandculture.org](http://www.indianartsandculture.org)

The Museum of Indian Arts and Culture, one of four museums in the Museum of New Mexico system, is a premier repository of Native art and material culture and tells the stories of the people of the Southwest from pre-history through contemporary art.

## MUSEUM OF INTERNATIONAL FOLK ART

[www.internationalfolkart.org](http://www.internationalfolkart.org)

Since the opening in September 1953, the Museum of International Folk Art has gained national and international recognition as an accredited Museum that is home to the world's largest collection of folk art.

## MUSEUM OF SPANISH COLONIAL ART

[www.spanishcolonial.org](http://www.spanishcolonial.org)

The Spanish Colonial Arts Society was founded in Santa Fe in 1925 by writer Mary Austin and artist/writer Frank G. Applegate. Its purpose was to preserve and perpetuate the Hispano art forms that have been produced in New Mexico and southern Colorado since the region was colonized by Spain in 1598, and to educate the public about these art forms and the art of all the Spanish colonies.

## NEW MEXICO HISTORY MUSEUM

[www.nmhistorymuseum.org](http://www.nmhistorymuseum.org)

The New Mexico History Museum and the Palace of the Governors National Historic Landmark are distinctive emblems of our nation's history. The museum presents exhibitions and public programs that interpret historical events and reflect on the wide range of New Mexico historical experiences.

## NEW MEXICO MUSEUM OF ART

[www.nmartmuseum.org](http://www.nmartmuseum.org)

The New Mexico Museum of Art began in 1917 as the Art Gallery for the Museum of New Mexico that was then located in the Palace of the Governors. The building helped establish the Pueblo Spanish Revival architectural style.



## THE PALACE OF THE GOVERNORS

[www.palaceofthegovernors.org](http://www.palaceofthegovernors.org)

Originally constructed in the early 17th century as Spain's seat of government for what is today the American Southwest, the Palace of the Governors chronicles the history of Santa Fe, as well as New Mexico and the region. This adobe structure, now the state's history museum, was designated a Registered National Historic Landmark in 1960 and an American Treasure in 1999.

## SANTA FE CHILDREN'S MUSEUM

[www.santafechildrensmuseum.org](http://www.santafechildrensmuseum.org)

The Santa Fe Children's Museum builds upon a child's natural sense of joy and discovery by cultivating habits of inquiry in the arts, sciences, and humanities. The museum's informal learning environment fosters interactions among children and families, and encourages active participation in the learning process through interactive exhibitions and programs.

## SITE SANTA FE

[www.sitesantafe.org](http://www.sitesantafe.org)

SITE Santa Fe creates significant experiences for visitors by presenting the most innovative visual art of our time in new and engaging ways. Since its opening in 1995, SITE Santa Fe has been committed to supporting new developments in contemporary art, encouraging artistic exploration, and expanding traditional museum experiences.

## WHEELWRIGHT MUSEUM OF THE AMERICAN INDIAN

[www.wheelwright.org](http://www.wheelwright.org)

Founded in 1937, the Wheelwright Museum of the American Indian is New Mexico's oldest non-profit, independent museum. The Wheelwright offers unique exhibitions of contemporary and historic Native American art.

**EVENTS, FIESTAS & PERFORMANCES**

## BURNING OF ZOZOBRA

[www.burnzozobra.com](http://www.burnzozobra.com)

Zozobra is a unique cultural event staged each year by the Kiwanis Club of Santa Fe as a fiery and exciting kick-off to the annual Fiestas de Santa Fe. The 'Burning of Will Shuster's Zozobra' is presented annually the Friday of Labor Day weekend. Friday evening at dusk the people of Santa Fe, friends new and old, all make their way to Fort Marcy Park where the Zozobra pageant takes place. Located just a few blocks from the historic Santa Fe Plaza. Zozobra, also known as Old Man Gloom (OMG) is the inspiration of artist Will Shuster and was introduced as part of the Fiesta events in 1926.

## FIESTA DE SANTA FE

[www.santafefiesta.org](http://www.santafefiesta.org)

The Santa Fe Fiesta Council is a volunteer organization created by the Official Fiesta Proclamation of city forefathers on September 16, 1712 to commemorate the peaceful 1692 resettlement of the area by Spain.

## IRONWEED PRODUCTIONS

[www.santafetheater.wordpress.com/ironweed-productions](http://www.santafetheater.wordpress.com/ironweed-productions)

Ironweed Productions produces plays rooted in the American experience. It is committed to utilizing the vast, eclectic talent within Northern New Mexico, cultivating young and emerging theater artists, and cooperating with other Performing Arts organizations to support and promote theater in our community. Ticket purchases available.

## LENSIC PERFORMING ARTS CENTER

[www.lensic.org](http://www.lensic.org)

The Lensic Performing Arts Center offers more than 200 events in dance, music, film, theater, opera, lectures and spoken word each year in a graceful interior and stunning exterior featuring both Moorish and Spanish Renaissance styles.

## PANDEMONIUM PRODUCTIONS

[www.pandemoniumprod.org](http://www.pandemoniumprod.org)

Pandemonium Productions is dedicated to enriching the lives of young people through performing arts. Pandemonium's Musical Theatre Program teaches students to become versatile in their approach to the performing arts.

## RODEO DE SANTA FE

[www.rodeodesantafe.org](http://www.rodeodesantafe.org)

The Rodeo de Santa Fe began 1949 as a professional rodeo in Santa Fe. Today it is one of the top 60 PRCA Rodeos in the nation.

## SANTA FE OPERA

[www.santafeopera.org](http://www.santafeopera.org)

Founded in 1957, the Santa Fe Opera now welcomes more than half its annual audience of 85,000 from outside New Mexico, representing every state in the union as well as 25 to 30 foreign countries. The Santa Fe Opera's mission is to advance the operatic art form by presenting ensemble performances of the highest quality in a unique setting with a varied repertoire of new, rarely performed, and standard works; to ensure the excellence of opera's future through apprentice programs for singers, technicians and art administrators; and to foster and enrich an understanding and appreciation of opera among a diverse public.

## SANTA FE CHAMBER MUSIC FESTIVAL

[www.santafechambermusic.com](http://www.santafechambermusic.com)

Since it was founded in 1972, the Santa Fe Chamber Music Festival has become one of the world's preeminent music festivals, guided by a visionary spirit and dedicated to artistic excellence and innovation. Contributing to its magic is the Festival's unique Santa Fe setting, nestled amid the timeless splendors of the Sangre de Cristo Mountains.

## SANTA FE CURRENTS NEW MEDIA

[www.currentsnewmedia.org](http://www.currentsnewmedia.org)

Currents New Media Festival is an annual, citywide event in collaboration with Parallel Studios. The Festival brings together the work of established, unrecognized and emerging New Media artists, from New Mexico, the US and the world, for events showcasing interactive and fine art video installations, multimedia performances, single channel video, animation, digital dome programs, experimental documentary, web based/app art forms, architectural mapping, the oculus rift, robotics and 3D printing.

## PERFORMANCE SANTA FE

[www.performancesantafe.org](http://www.performancesantafe.org)

Performance Santa Fe is devoted to presenting world class music, dance, and theater, and to provide excellent performing arts education for our community. Performance Santa Fe's history began in 1927 when the first concert by the then Santa Fe Community Concert Association (SFCCA) took place.

## SANTA FE PLAYHOUSE

[www.santafeplayhouse.org](http://www.santafeplayhouse.org)

In 1922, American novelist and essayist, Mary Austin, incorporated the Playhouse as the Santa Fe Little Theatre. With uninterrupted seasons since its founding, The Santa Fe Playhouse has earned the distinction of being "the oldest continuously running theatre west of the Mississippi."

## SANTA FE WINE AND CHILE FIESTA

[www.santafewineandchile.org](http://www.santafewineandchile.org)

The Santa Fe Wine & Chile Fiesta is an annual five-day weekend of events featuring the culinary artistry found in Santa Fe, New Mexico's many excellent restaurants coupled with the sophistication and wines of national wineries. The weekend culminates with the Grand Tasting at the Santa Fe Opera where all participating restaurants and wineries serve samples of their best food and wine.

## ST. JOHN'S COLLEGE SUMMER MUSIC ON THE HILL

[www.sjc.edu/santa-fe/events/music-on-the-hill](http://www.sjc.edu/santa-fe/events/music-on-the-hill)

The Music on the Hill™ concert series is in its 12th season offering free music each Wednesday evening in the summer.

## SUMMER MUSIC ON THE PLAZA

Santa Fe Bandstand is a free summer music festival on the Santa Fe Plaza. Brought to you by Outside In Productions, a nonprofit, community-based group established in the spring of 1995, to bring free, live performances, presentations and workshops to people confined to shelters, residential treatment facilities, nursing homes, correctional facilities, and any other institutions or human services programs where people would otherwise not have access to the arts. Call (505) 986-6054 or contact at: [info@santafebandstand.org](mailto:info@santafebandstand.org)

## THEATER GROTTESCO

[www.theatergrottesco.org](http://www.theatergrottesco.org)

Theater Grottesco was founded in 1983 in Paris, France, by John Flax and Didier Maucort, former members of Minneapolis' Theatre de la Jeune Lune and graduates of France's Ecole Jacques Lecoq. Joined shortly thereafter by Elizabeth Wiseman, another Lecoq graduate, the company has evolved to 15 artists comprising a tremendous range of theatrical expertise. In 1996, Theater Grottesco moved to northern New Mexico to join an artistic community which had welcomed the company on three early U.S. tours.

## ART, INSTITUTES & MARKETS

## FARMERS MARKET

[www.santafefarmersmarket.com](http://www.santafefarmersmarket.com)

The market that began with a handful of farmers in the late 1960s is now New Mexico's largest farmers' market and one of the most widely recognized markets in the United States. The Santa Fe Farmers Market represents over 150 active vendors and features hundreds of different agricultural products.





## INDIAN MARKET

[www.swaia.org](http://www.swaia.org)

For over a century, Santa Fe Indian Market has brought together the most gifted Native American artists from the U.S. with millions of visitors and collectors from around the world. The extended weekend of beauty and celebration ranks as the world's largest and most highly acclaimed Native American arts show and as New Mexico's largest attended annual weekend event.

## INTERNATIONAL FOLK ART ALLIANCE

[www.folkartmarket.org](http://www.folkartmarket.org)

Since 2004, the organization known as the Santa Fe International Folk Art Market has been providing opportunity to folk artists at the world's largest market of its kind. The organization has expanded programs to meet the specific challenges that folk artists are facing in the global marketplace. The International Folk Art Market | Santa Fe (IFAM | Santa Fe) is its flagship program.

## NATIONAL DANCE INSTITUTE NEW MEXICO

[www.ndi-nm.org](http://www.ndi-nm.org)

NDI New Mexico is founded with the knowledge that the arts have a unique power to engage and motivate children. The purpose of our distinctive programs is to help children develop discipline, a standard of excellence, and a belief in themselves that will carry over into all aspects of their lives.

## SANTA FE ART INSTITUTE

[www.sfai.org](http://www.sfai.org)

The Santa Fe Art Institute (SFAI) was found in 1985 to provide a unique opportunity for emerging artists to pursue a brief, intense period of study with critically acclaimed visiting artists.



## SPANISH MARKET

[www.spanishcolonial.org/spanish-market](http://www.spanishcolonial.org/spanish-market)

Annually hosted by the Spanish Colonial Arts Society, the initial 1926 Spanish Market was an effort by this small group to support and promote the local New Mexican art forms, and the men and women who created them.

## WAREHOUSE 21

[www.warehouse21.org](http://www.warehouse21.org)

Warehouse 21 is an arts, media & entertainment community center serving young people through mentorship opportunities in the arts and encourages all ages community engagement by combining collaborative resources.

## OUTDOORS

### HYDE MEMORIAL STATE PARK

[www.emnrd.state.nm.us/SPD/hydememorialstatepark.html](http://www.emnrd.state.nm.us/SPD/hydememorialstatepark.html)

### KASHA-KATUWE TENT ROCKS NATIONAL MONUMENT

[https://www.blm.gov/nlcs\\_web/sites/nm/st/en/prog/NLCS/KKTR\\_NM.html](https://www.blm.gov/nlcs_web/sites/nm/st/en/prog/NLCS/KKTR_NM.html)

### THE MESA PRIETA PETROGLYPH PROJECT

[www.mesaprietapetroglyphs.org](http://www.mesaprietapetroglyphs.org)

North of Espanola, the Mesa Prieta Petroglyph project offers tours and a community lecture series featuring the preserve's 55,000 plus petroglyphs.

### SANTA FE BOTANICAL GARDEN

[www.santafebotanicalgarden.org](http://www.santafebotanicalgarden.org)

The Santa Fe Botanical Garden celebrates, cultivates and conserves the rich botanical heritage and biodiversity of our region. In partnership with nature, we demonstrate our commitment through education, community service, presentation of the arts, and the sustainable management of our nature preserve and public garden.



## REGISTERING TO VOTE IN SANTA FE COUNTY

SANTA FE COUNTY CLERK

[www.santafecountynm.gov/clerk](http://www.santafecountynm.gov/clerk)

(505) 986-6280

100 Catron Street | Santa Fe, NM 87501

There are several locations where a resident can register to vote. Residents may register at the following locations, among others:

Santa Fe County Clerk's Office - 100 Catron Street

Office of the Secretary of State - 325 Don Gaspar, Suite 300 or Register online at the Secretary of States's Office website at: <https://portal.sos.state.nm.us/OVR/WebPages/InstructionsStep1.aspx>

Motor Vehicle Division - 2546 Camino Entrada

Motor Vehicle Division - 850 St. Michaels Drive

Santa Fe Community College - 6401 South Richards Avenue

Santa Fe Indian School - 1501 Cerrillos Road

Santa Fe Public Health Department - 605 Letrado Street

Santa Fe Main Library - 145 Washington Avenue

Southside Branch Library - 6599 Jaguar Drive

Southwestern College - 3960 San Felipe Road

St. Johns College - 1160 Camino De Cruz Blanca

Individuals can use the New Mexico Online Registration to: 1) Register to Vote in federal, state, county and city elections in New Mexico; 2) Update your registration, if your name or address has changed or to change your political party.

In order to register as a new voter or update your registration online, your personal information **must match** the information that is on file with the New Mexico Motor Vehicle Division (MVD). These are the items that must match: 1) your social security number; 2) your driver's license number or state identification number, and 3) your date of birth.

#### REGISTERING TO VOTE USING OTHER ELECTRONIC APPLICATIONS

Follow the instructions below:

For all electors within the United States:

Step 1. Download the National Voter Registration Application or

<https://www.eac.gov/voters/national-mail-voter-registration-form/>

Step 2. Print State Application, and make sure to include your social security number on your Application.

Step 3. Mail your signed application to Santa Fe County Clerk's Office at the address listed above.

#### FOR OVERSEAS AND ARMED FORCES ELECTORS ONLY:

Step 1. Download the Overseas and Armed Forces Electors Federal Post Card Application. [www.fvap.gov/uploads/FVAP/Forms/fpca2013.pdf](http://www.fvap.gov/uploads/FVAP/Forms/fpca2013.pdf)

Step 2. Mail, e-mail [overseas@santafecountynm.gov](mailto:overseas@santafecountynm.gov) your signed Federal Post Card Application to the Santa Fe County Clerk's Office at the address listed above.



## SANTA FE LINGO

So you think you've lived in Santa Fe long enough to spout off some fancy sounding local places and items. Give the list a try!

**Aqua Fria** – (Ahwa FREE-yah): Cold water, a major road connecting the traditional village of Aqua Fria and downtown Santa Fe

**Acequia** – (ah-SAY-key-uh): Irrigation Ditch

**Arroyo** – (uh-ROI-oh): Creek or Brook

**Avenida** – (ah-veh-NEE-duh): Avenue

**Bischochito** – (biz-ka-cheeto): A crisp cookie of New Mexican origin flavored with anise and cinnamon

**Bueno** – (bweno): Good

**Calle** – (CAI-yeh): Street

**Camino Real** – (cah-MEE-no Ray-AL): The Royal Road and specifically the El Camino Real de Tierra Adentro, a historical road that went from Mexico City to Santa Fe, New Mexico

**Cerrillos** – (suh-REE-yos): Little hills, main business corridor in Santa Fe

**Cochiti** – (coe-chee-tee): Cochiti Pueblo found south of Santa Fe

**Entrada** – (in-tra-da): Entrance

**Espanola** – (ess-pan-YO-la): The Spanish Island and a city north of Santa Fe

**Kiva** – (kee-va): Pueblo ceremonial structure or round adobe fireplace

**La Cienega** – (la-see-en-a-guh): Marsh or Swamp and a rural area found south of Santa Fe

**Las Campanas** – (los kah-pown-us): The bells, a gated, subdivision northeast of Santa Fe with large lots, mountain views, and golf courses

**Manana** – (mahn-YAN-na): Tomorrow or some other later time, an expression used by Santa Feans for when something may be accomplished or expected

**Ojo Caliente** – (o ho Call-lay-yenta): An oasis of hot springs

**Paseo de Peralta** – (pass-say-yo duh puh-RAWL-tah): A leisurely walk or stroll in the evening of the Peralta family (Spanish surname), an outlying road that encircles the plaza

**Pinon** – (pin-yohn): A pine nut from the Pinon tree used in a variety of New Mexico candies and foods

**Pojoaque** – (puh-WALK-kah): Tewa Posuwaegheh meaning for a drink water place and a Pueblo found north of Santa Fe

**Portal** – (poor-tall): Entrance hall

**Rancho de las Golondrinas** – (Rancho de la Go-lawn-dreen-us): Ranch of the Swallows, large ranch in the southwest area of Santa Fe County featuring a museum and period re-enactors stationed throughout numerous historical New Mexico state and territorial buildings

**Rancho Viejo** – (Rancho Vee-YAH-ho): Old Ranch, large subdivision in southeast Santa Fe

**Rodeo** – (Row-DEE-oh): A public exhibition of cowboy skills or roundup of cattle and a main corridor from north to south Santa Fe

**Roundhouse** – New Mexico State Capitol Roundhouse Building

**Santa Fe** – (Sahn-tah Fay): A Spanish version of the city's pronunciation

**Siler** – (Sigh-lere): Sell or Rope, Germanic origin, business road connecting Cerrillos and Aqua Fria

**Tesuque** – (Tah-SUE-kayh): Spanish variation of the Tewa name, Te Tesugeh Oweengeh, meaning the "village of the narrow place of the cottonwood trees"

**Viga** – (vee-guh): A rough-hewn roof timber or rafter, especially in an adobe home whose end may also jut outside of the home

**Zozobra** – (Zow-zow-bra): "Old Man Gloom" is a giant marionette effigy that is built and burned every autumn during Fiestas de Santa Fe in Santa Fe